

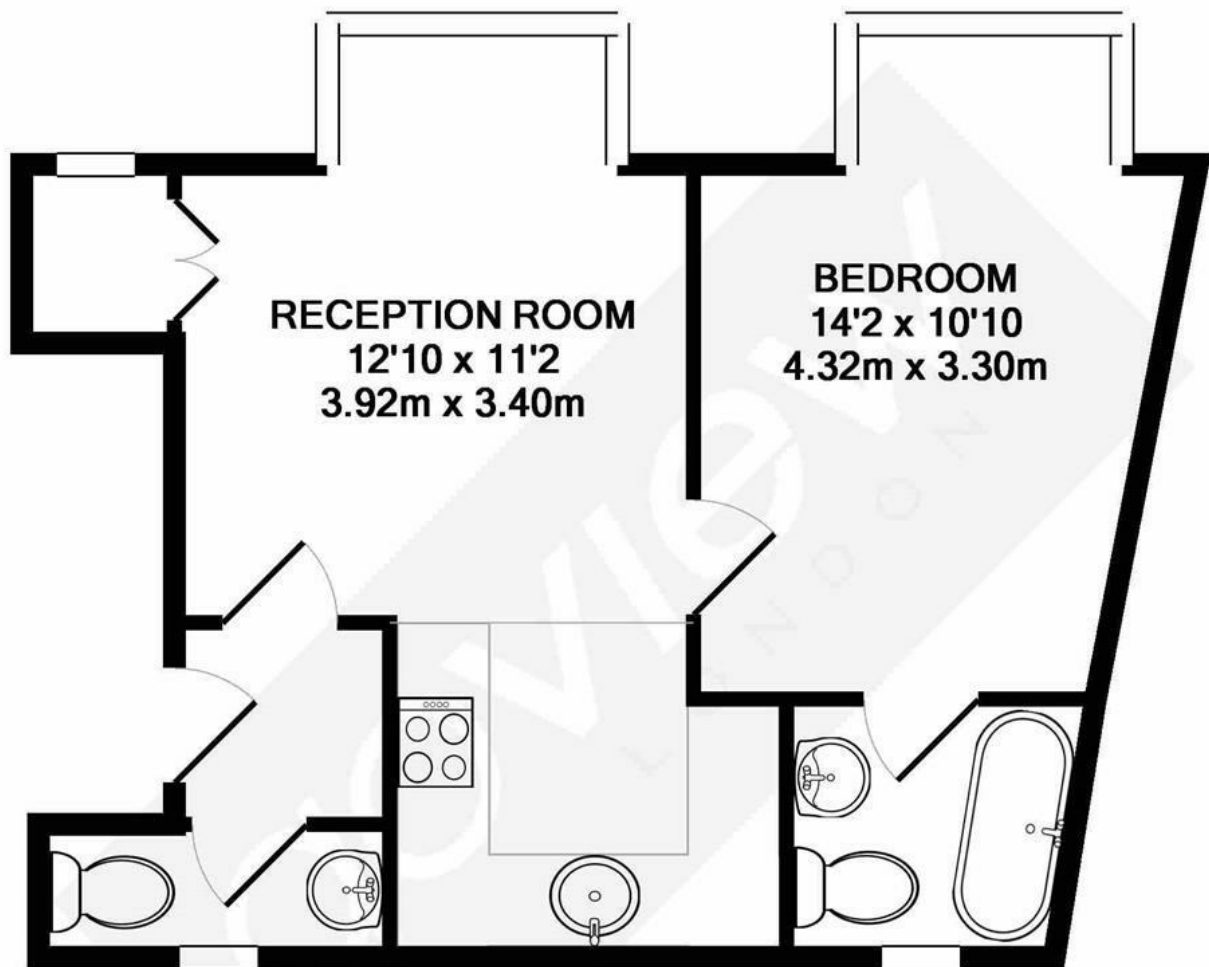


## Avenue Road, W3

LONG LET. This stunning one bedroom flat is presented in impeccable condition throughout and benefits from a modern interior and a great location.

- MODERN INTERIOR
- GREAT LOCATION
- CLOSE TO LOCAL TRANSPORT
- STYLISH BATHROOM
- CLOSE TO LOCAL AMENITIES
- DOUBLE BEDROOM


£1,600 PCM



**TOTAL APPROX. FLOOR AREA 405 SQ.FT. (37.6 SQ.M.)**

Whilst every attempt has been made to ensure the accuracy of the floor plan contained here, measurements of doors, windows, rooms and any other items are approximate and no responsibility is taken for any error, omission, or mis-statement. This plan is for illustrative purposes only and should be used as such by any prospective purchaser. The services, systems and appliances shown have not been tested and no guarantee as to their operability or efficiency can be given

Made with Metropix ©2017

| Energy Efficiency Rating                    |   |           |
|---|---|-----------|
|   | Current   | Potential |
| Very energy efficient - lower running costs |   |           |
| (92 plus) <b>A</b>                          |   |           |
| (81-91) <b>B</b>                            |   |           |
| (69-80) <b>C</b>                            |   |           |
| (55-68) <b>D</b>                            | 52  | 58        |
| (39-54) <b>E</b>                            |   |           |
| (21-38) <b>F</b>                            |   |           |
| (1-20) <b>G</b>                             |   |           |
| Not energy efficient - higher running costs |   |           |
| <b>England &amp; Wales</b>                  | EU Directive 2002/91/EC  |           |