



## Melville Villas Road, W3

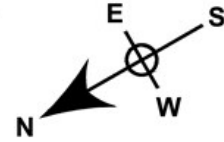
LONG LET. This two bedroom duplex flat offers stylish accommodation which benefits from a modern interior and a great location close to local amenities.

- PRIVATE ROOF TERRACE
- OFF ROAD PARKING
- MODERN INTERIOR
- TWO BATHROOMS
- CLOSE TO LOCAL AMENITIES
- TWO DOUBLE BEDROOMS

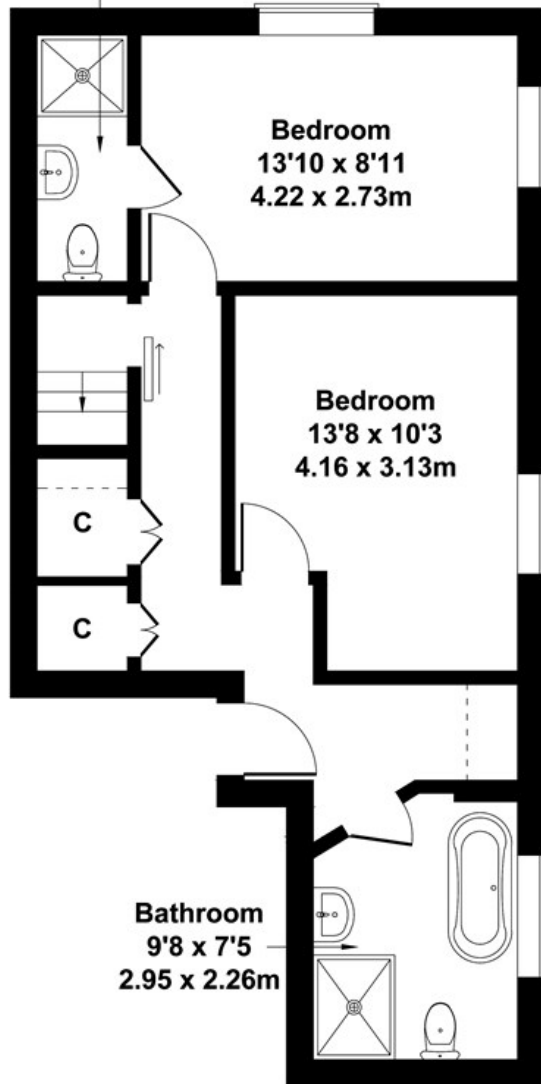
£2,450 PCM

# F7 - Melville Villas Rd

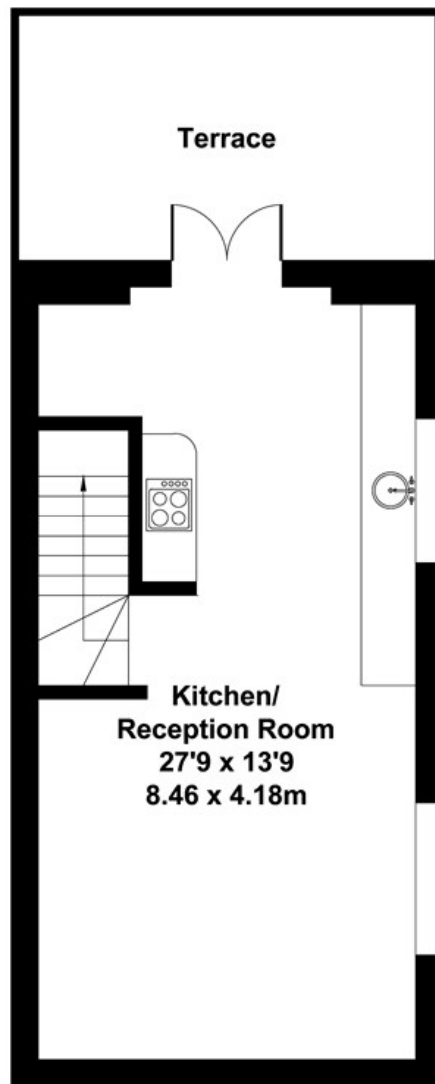
Approximate Gross Internal Area  
904 sq ft - 84 sq m



En-suite  
8'11 x 3'5  
2.73 x 1.04m



**THIRD FLOOR**



**FOURTH FLOOR**

Not to Scale. Produced by The Plan Portal 2021  
**For Illustrative Purposes Only.**

Energy Efficiency Rating		
	Current	Potential
Very energy efficient - lower running costs		
(92 plus) <b>A</b>		
(81-91) <b>B</b>		
(69-80) <b>C</b>		
(55-68) <b>D</b>		
(39-54) <b>E</b>		
(21-38) <b>F</b>		
(1-20) <b>G</b>		
Not energy efficient - higher running costs		
<b>England &amp; Wales</b>	EU Directive 2002/91/EC 