



Grange Park, W%

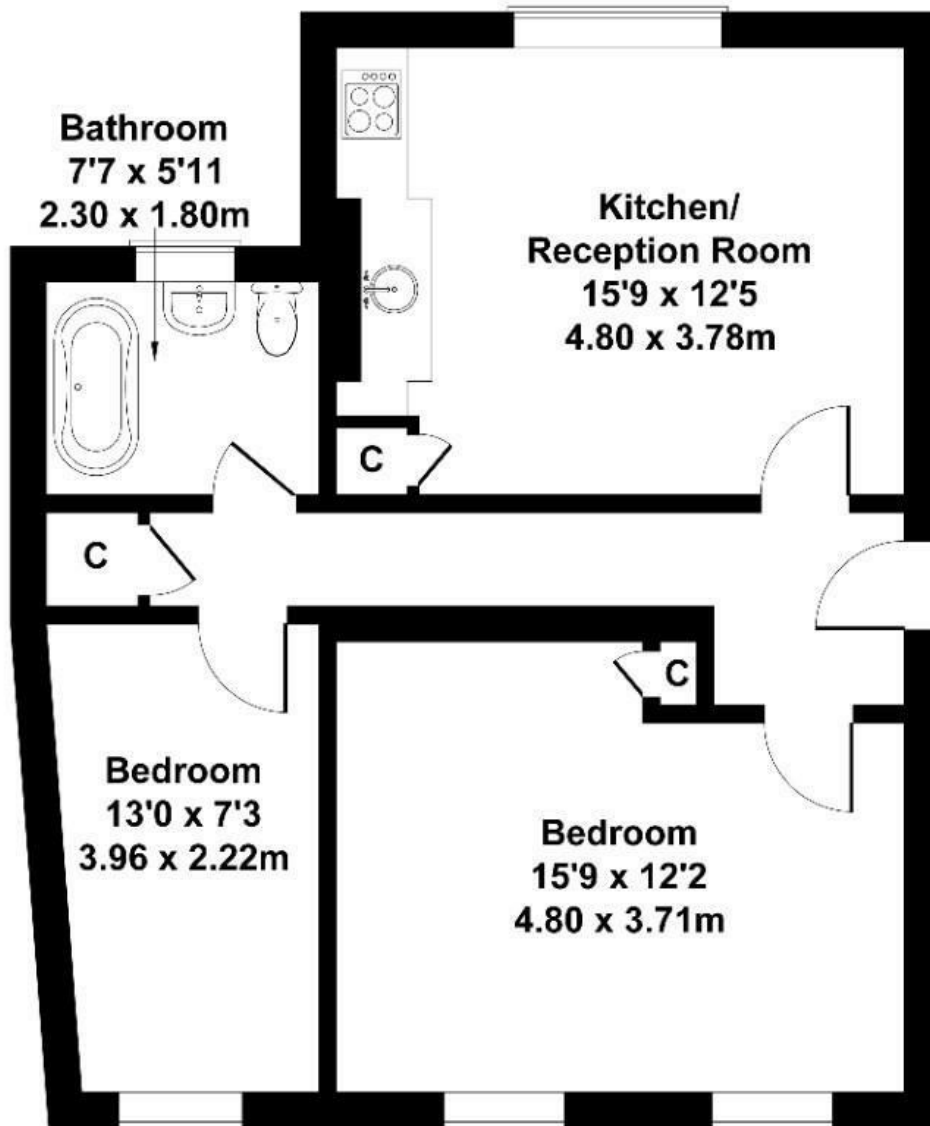
LONG LET. Located in the heart of Ealing this stunning two bedroom flat is presented in excellent condition and benefits from impressive living space with modern interiors.

- Ground floor flat
- Two bedrooms
- Completed refurbished to high standard
- Desired road just a short walk from Ealing Broadway
- Walpole and Ealing Common close by
- Close to transport links

£2,300

Grange Park

Approximate Gross Internal Area
635 sq ft - 59 sq m



GROUND FLOOR

Not to Scale. Produced by The Plan Portal 2025
For Illustrative Purposes Only.

Energy Efficiency Rating		
	Current	Potential
Very energy efficient - lower running costs		
(92 plus) A		
(81-91) B		
(69-80) C		75
(55-68) D	57	
(39-54) E		
(21-38) F		
(1-20) G		
Not energy efficient - higher running costs		
England & Wales		EU Directive 2002/91/EC