



Birkbeck Avenue, W3

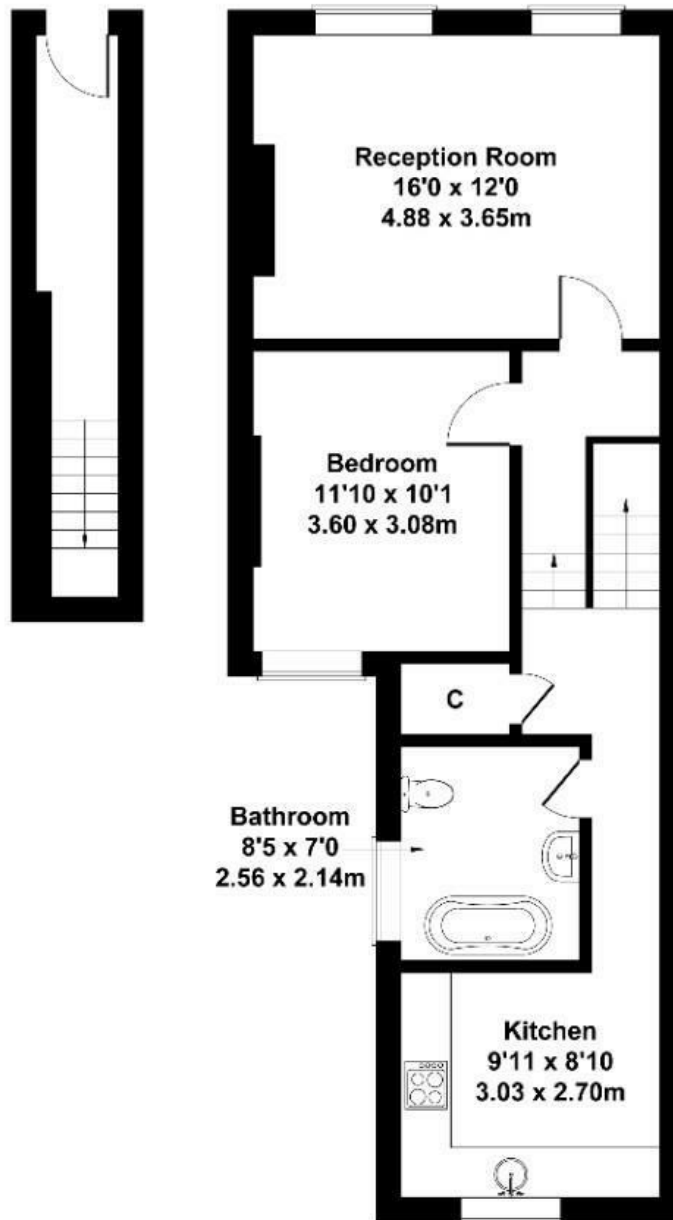
LONG LET. Recently refurbished, this bright and spacious one-bedroom flat is set on a quiet residential street and offers well-presented interiors throughout.

- One bedroom apartment
- Recently refurbished
- Spacious reception room
- Permit parking
- Available now
- Open to sharers

£1,900 Per Month

Birkbeck Avenue

Approximate Gross Internal Area
678 sq ft - 63 sq m



GROUND FLOOR

FIRST FLOOR

Not to Scale. Produced by The Plan Portal 2025
For Illustrative Purposes Only.

Energy Efficiency Rating		
	Current	Potential
Very energy efficient - lower running costs		
(92 plus) A		
(81-91) B		
(69-80) C		
(55-68) D		
(39-54) E		
(21-38) F		
(1-20) G		
Not energy efficient - higher running costs		
England & Wales	EU Directive 2002/91/EC	