



Underhill Gardens, London

A large modern one bedroom apartment situated on the 6th floor of the popular Bruce Court development which is situated just a short walk from Ealing Broadway centre.

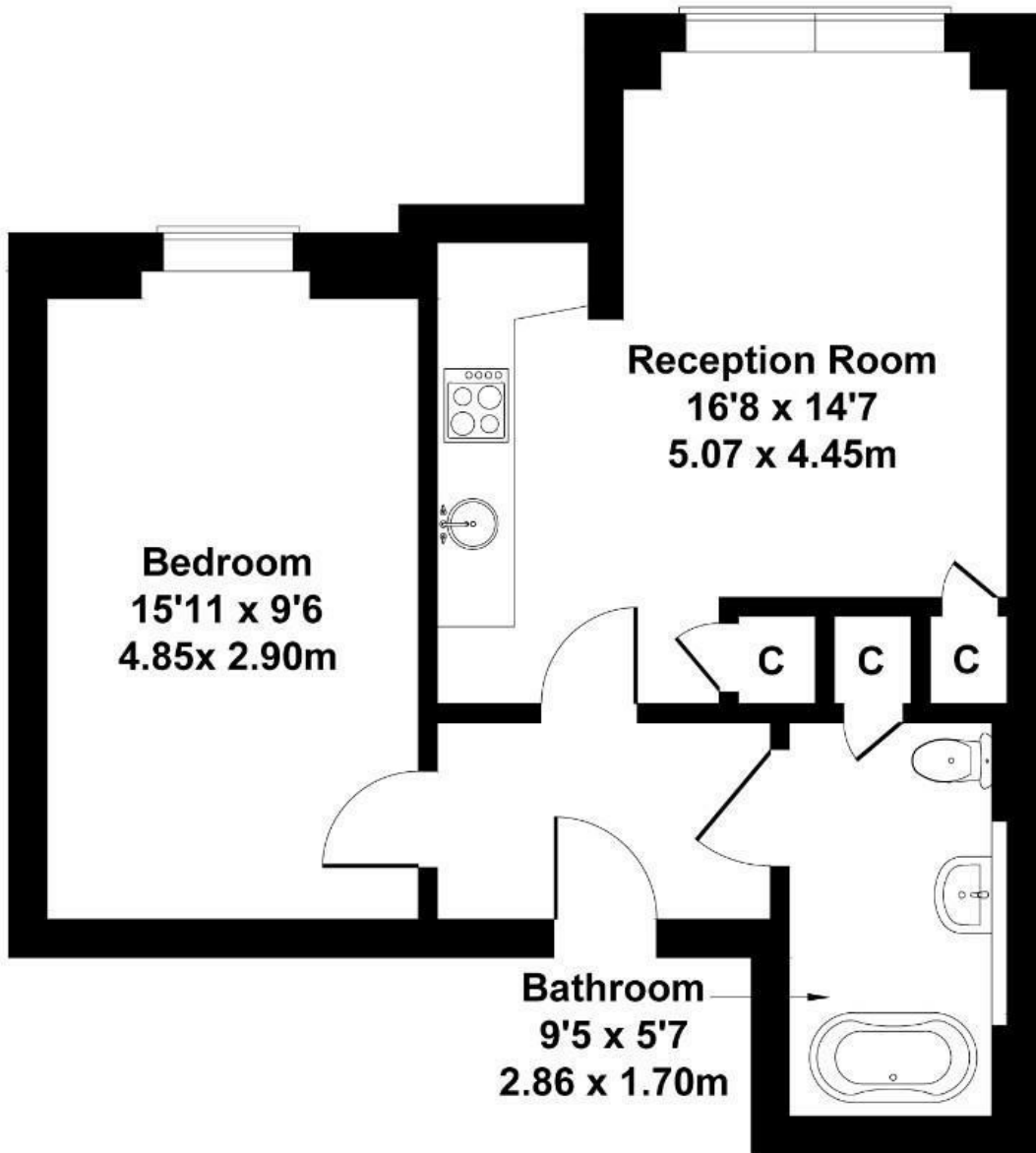
The property comes in excellent condition throughout, measuring close to 500 sq ft with a large fully fitted open plan reception (16'8 x 14'7) family sized bathroom, a large double bedroom and ample storage.

- One bedroom apartment
- Sixth Floor
- No chain
- 990 years remain on lease
- Video entry
- Lift
- Built in 2015
- Large communal roof terrace
- Short walk from the centre of Ealing Braodway
- Multiple transport links close by


£350,000

Bruce Court

Approximate Gross Internal Area
495 sq ft - 46 sq m



Not to Scale. Produced by The Plan Portal 2024
For Illustrative Purposes Only.

| Energy Efficiency Rating | | |
|---|---|-----------|
| | Current | Potential |
| Very energy efficient - lower running costs | | |
| (92 plus) A | | |
| (81-91) B | 82 | 82 |
| (69-80) C | | |
| (55-68) D | | |
| (39-54) E | | |
| (21-38) F | | |
| (1-20) G | | |
| Not energy efficient - higher running costs | | |
| England & Wales | EU Directive 2002/91/EC  | |