



Goldsmith Avenue, W3

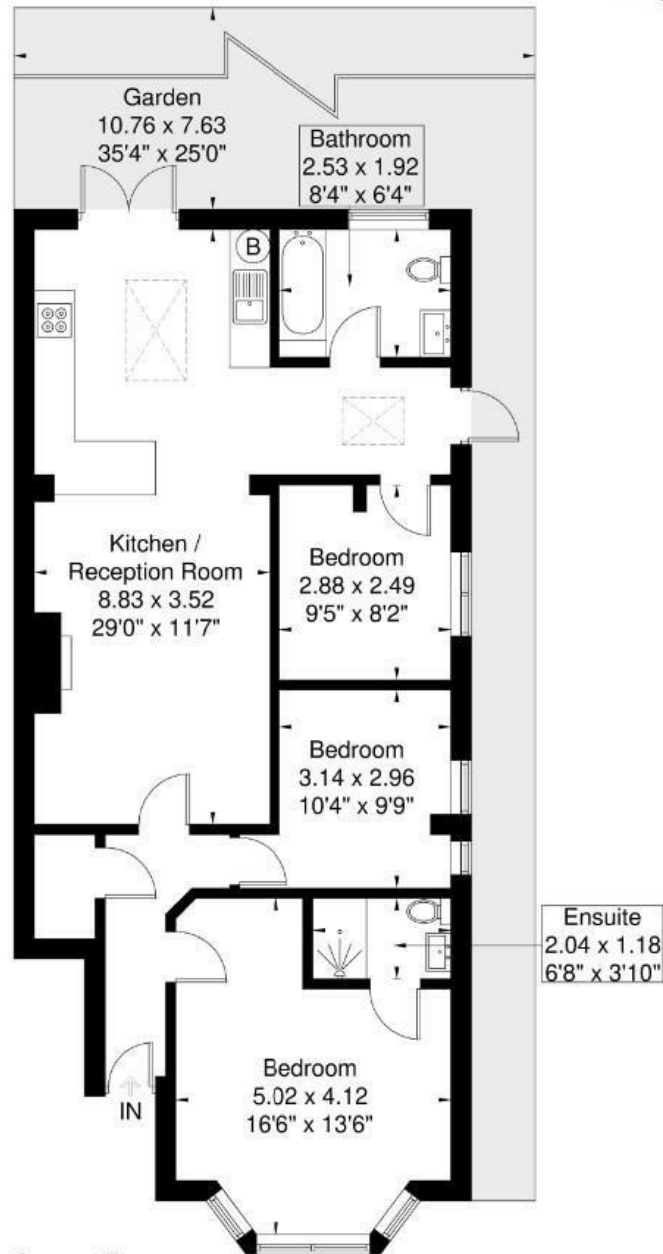
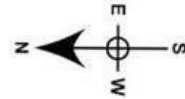
LONG LET: A newly refurbished three-bedroom ground-floor apartment, nestled in the sought-after Poets Corner pocket of Acton Central.

- THREE BEDROOMS APARTMENT
- TWO BATHROOMS
- MODERN FULLY FITTED KITCHEN
- NEWLY REFURBISHED
- OFF-STREET PARKING
- CLOSE TO LOCAL TRANSPORT AND AMENITIES

£2,650 Per Month

Goldsmith Avenue

Approximate Gross Internal Area = 83.9 sq m / 903 sq ft



Ground Floor

Although every attempt has been made to ensure accuracy, all measurements are approximate.
The floorplan is for illustrative purposes only and not to scale.

© www.prerspective.co.uk

Energy Efficiency Rating		
	Current	Potential
Very energy efficient - lower running costs		
(92 plus) A		
(81-91) B		
(69-80) C		
(55-68) D		
(39-54) E		
(21-38) F		
(1-20) G		
Not energy efficient - higher running costs		
England & Wales	EU Directive 2002/91/EC	

27 Churchfield Road, Acton, W3 6BD

Tel: 020 8017 7950 Email: sales@goviewlondon.co.uk goviewlondon.co.uk