

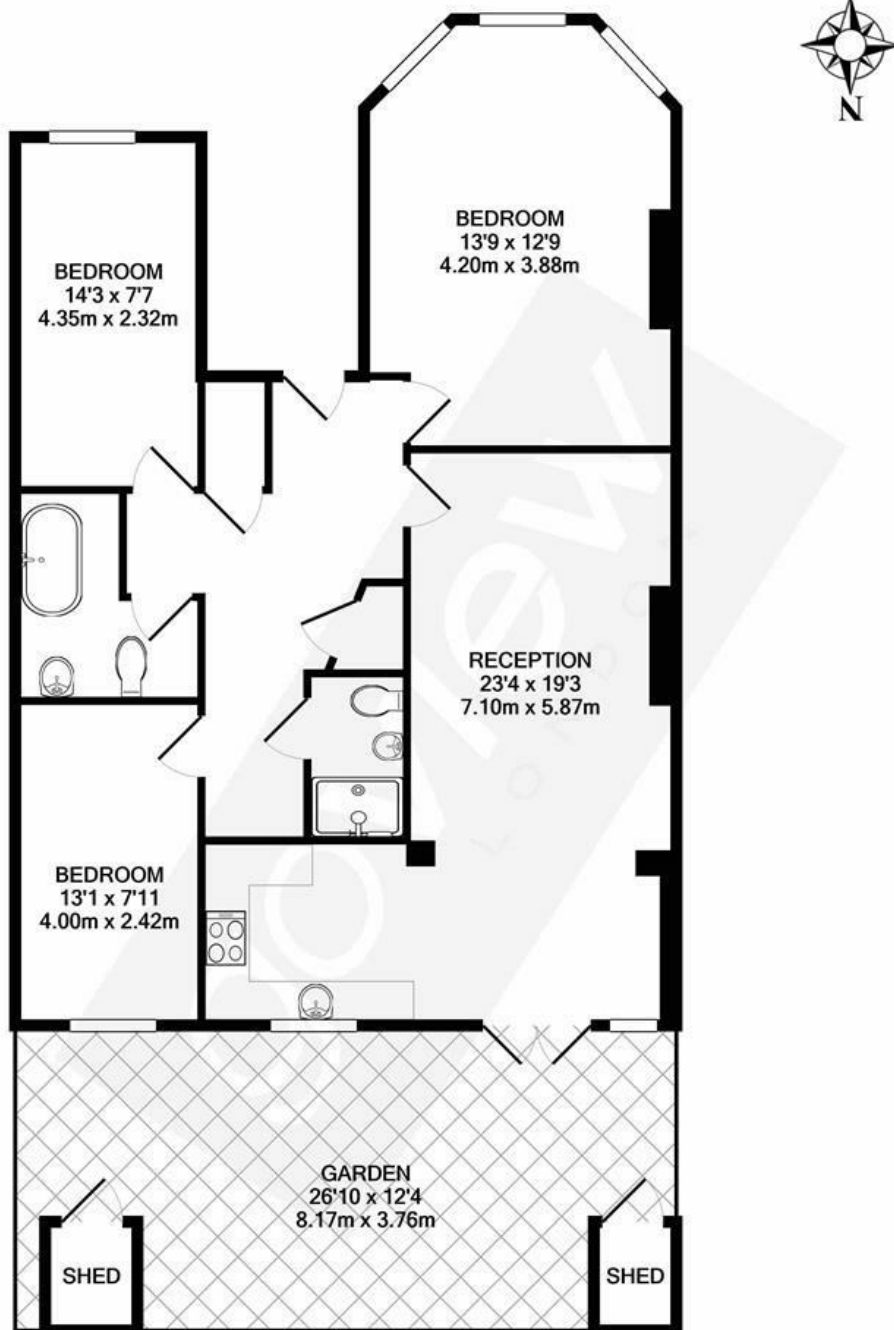


## Cecil Road, W3

LONG LET. This three bedroom garden flat is situated in a leafy residential street offering a modern interior and is situated close to public transport.

- Move date 5th July 2025
- Open plan kitchen
- Modern interior
- Close to local amenities
- Large garden
- Fully furnished

£2,850 PCM



**TOTAL APPROX. FLOOR AREA 962 SQ.FT. (89.3 SQ.M.)**

Whilst every attempt has been made to ensure the accuracy of the floor plan contained here, measurements of doors, windows, rooms and any other items are approximate and no responsibility is taken for any error, omission, or mis-statement. This plan is for illustrative purposes only and should be used as such by any prospective purchaser. The services, systems and appliances shown have not been tested and no guarantee as to their operability or efficiency can be given  
Made with Metropix ©2020

Energy Efficiency Rating		
	Current	Potential
Very energy efficient - lower running costs		
(92 plus) <b>A</b>		
(81-91) <b>B</b>		
(69-80) <b>C</b>		
(55-68) <b>D</b>		
(39-54) <b>E</b>		
(21-38) <b>F</b>		
(1-20) <b>G</b>		
Not energy efficient - higher running costs		
<b>England &amp; Wales</b>	EU Directive 2002/91/EC	