



North Common Road, W5

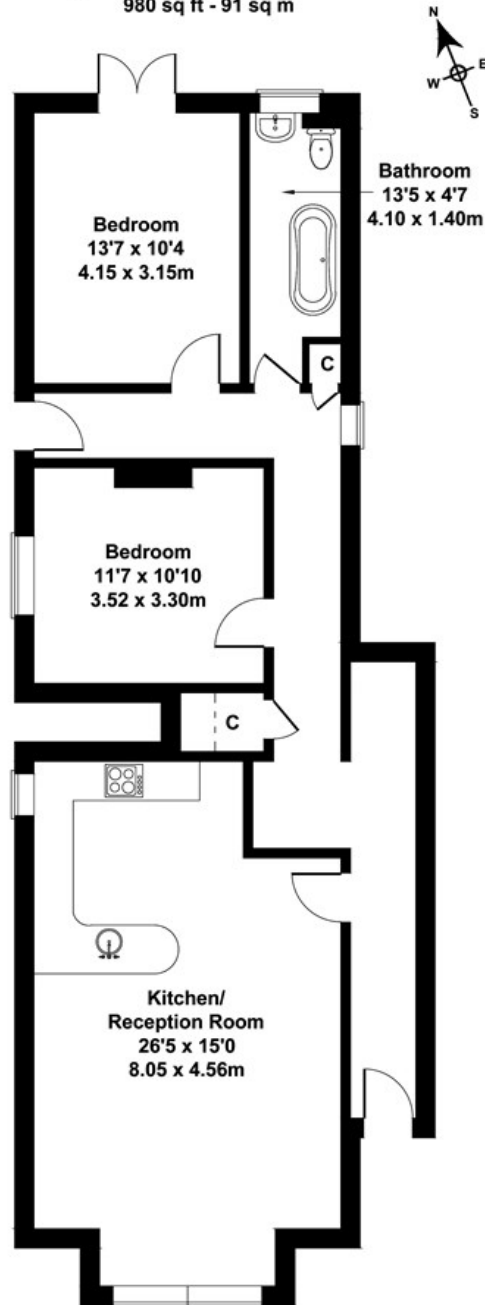
LONG LET. This stunning two-bedroom garden flat boasts beautiful interiors, modern décor and is well located close to local amenities and transport links.

- GARDEN FLAT
- TWO DOUBLE BEDROOMS
- LARGE OPEN PLAN RECEPTION/KITCHEN
- CLOSE TO STATION
- HIGH CELLINGS
- OVERLOOKING EALING COMMON

£2,500 PCM

North Common Road

Approximate Gross Internal Area
980 sq ft - 91 sq m



GROUND FLOOR

Not to Scale. Produced by The Plan Portal 2021
For Illustrative Purposes Only.

Energy Efficiency Rating		
	Current	Potential
Very energy efficient - lower running costs		
(92 plus) A		
(81-91) B		
(69-80) C		
(55-68) D		
(39-54) E		
(21-38) F		
(1-20) G		
Not energy efficient - higher running costs		
England & Wales	EU Directive 2002/91/EC	