



Felix Road, W13

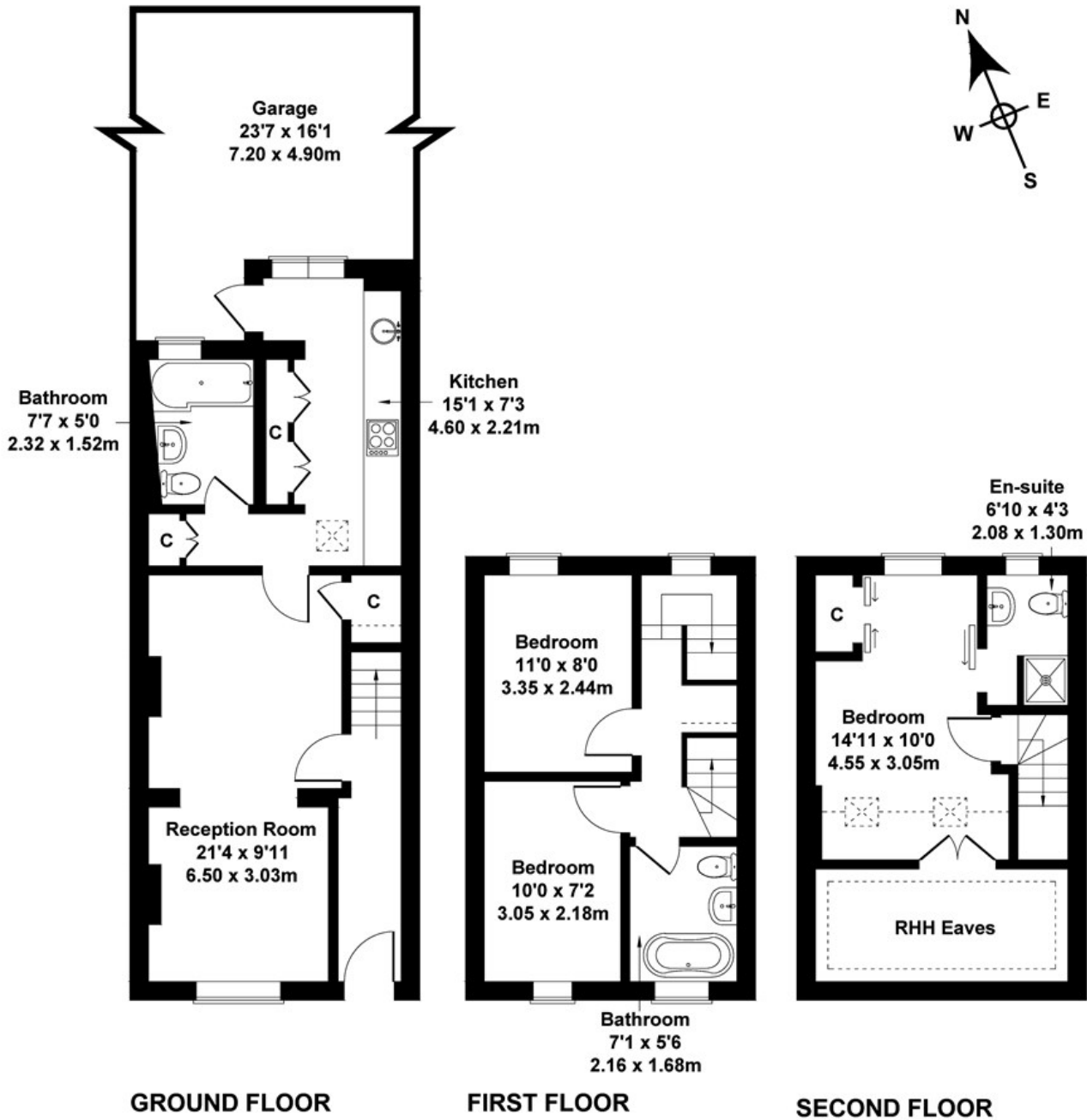
LONG LET. This beautifully presented three-bedroom house is in great condition, well located close to transport links.

- THREE BEDROOM HOUSE
- LARGE RECEPTION ROOM
- CLOSE TO A CROSSRAIL STATION
- PRIVATE GARDEN

£2,600 PCM

Feliz Road

Approximate Gross Internal Area
947 sq ft - 88 sq m



Not to Scale. Produced by The Plan Portal 2022
For Illustrative Purposes Only.

Energy Efficiency Rating		
	Current	Potential
Very energy efficient - lower running costs		
(92 plus) A		
(81-91) B		
(69-80) C		
(55-68) D		
(39-54) E		
(21-38) F		
(1-20) G		
Not energy efficient - higher running costs		
England & Wales		EU Directive 2002/91/EC