



Lindfield Road, W5

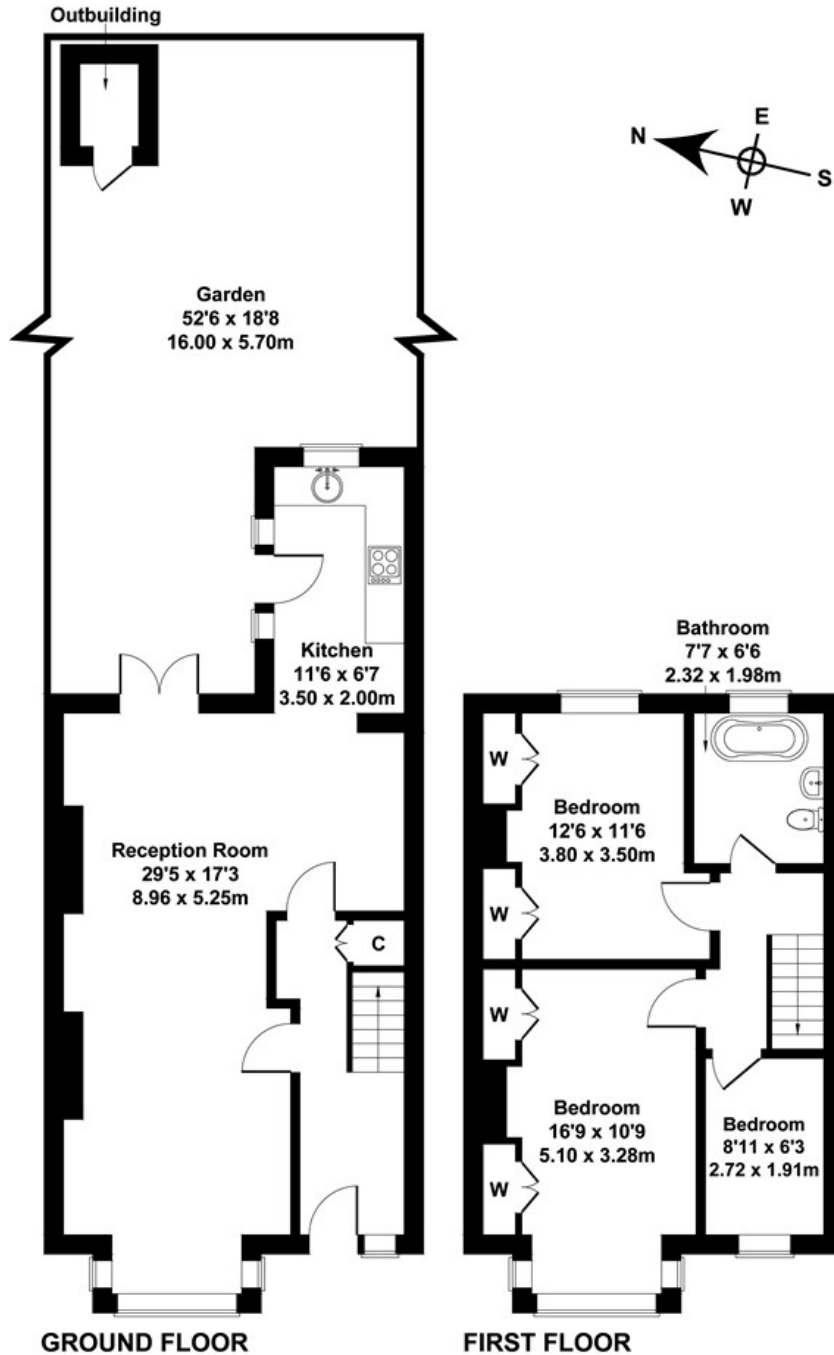
LONG LET. This beautifully presented three bedroom family home boasts modern décor and is located in the heart of Pitshanger Village.

- THREE BEDROOM HOUSE
- LARGE GARDEN
- GREAT LOCATION
- PITSHANGER VILLAGE
- DOUBLE RECEPTION ROOM
- CLOSE TO AMENITIES

£3,500 PCM

Lindfield Rd

Approximate Gross Internal Area
1033 sq ft - 96 sq m



Not to Scale. Produced by The Plan Portal 2021
For Illustrative Purposes Only.

Energy Efficiency Rating		
	Current	Potential
Very energy efficient - lower running costs		
(92 plus) A		
(81-91) B		
(69-80) C		
(55-68) D		
(39-54) E		
(21-38) F		
(1-20) G		
Not energy efficient - higher running costs		
England & Wales	EU Directive 2002/91/EC	