



## Baronsmede, W5

Long let - A Stunning four-Bedroom home near Gunnersbury Park  
– Interior designed and fully renovated to a very high standard.

- Four spacious bedrooms
- Two modern bathrooms
- Off street parking
- Open-plan kitchen & dining area
- Interior-designed throughout
- Laundry room & extensive garden
- 7 minutes to Gunnersbury Park & Acton Town (Piccadilly/District Lines)

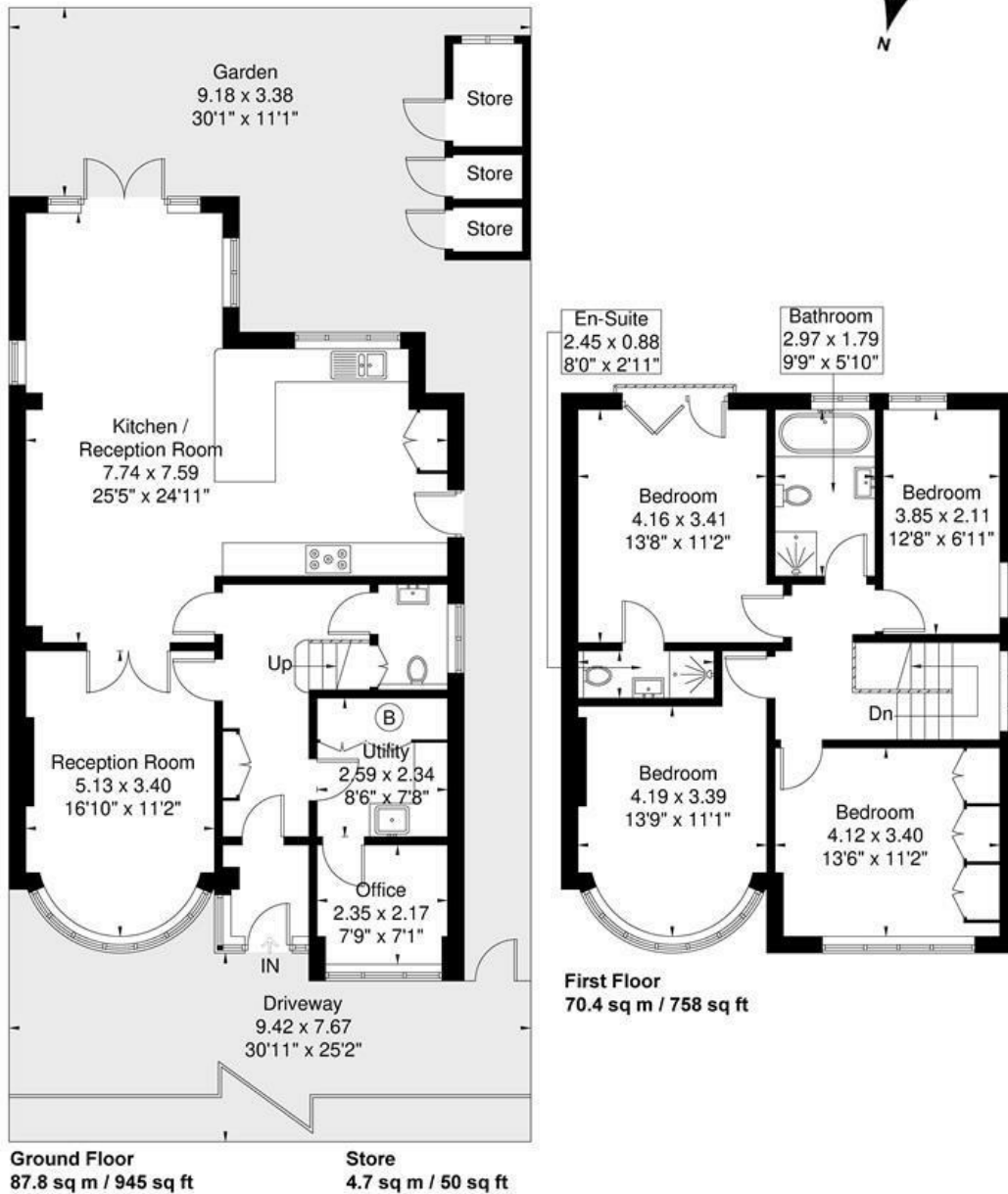
£5,000

# Baronsmede

Approximate Gross Internal Area = 158.2 sq m / 1703 sq ft

Store = 4.7 sq m / 55 sq ft

Total = 162.9 sq m / 1753 sq ft



Although every attempt has been made to ensure accuracy, all measurements are approximate.

The floorplan is for illustrative purposes only and not to scale.

© www.prerspective.co.uk

Energy Efficiency Rating		
	Current	Potential
Very energy efficient - lower running costs		
(92 plus) <b>A</b>		
(81-91) <b>B</b>		
(69-80) <b>C</b>		
(55-68) <b>D</b>		
(39-54) <b>E</b>		
(21-38) <b>F</b>		
(1-20) <b>G</b>		
Not energy efficient - higher running costs		
<b>England &amp; Wales</b>	EU Directive 2002/91/EC	