



Gunnersbury Avenue, W5

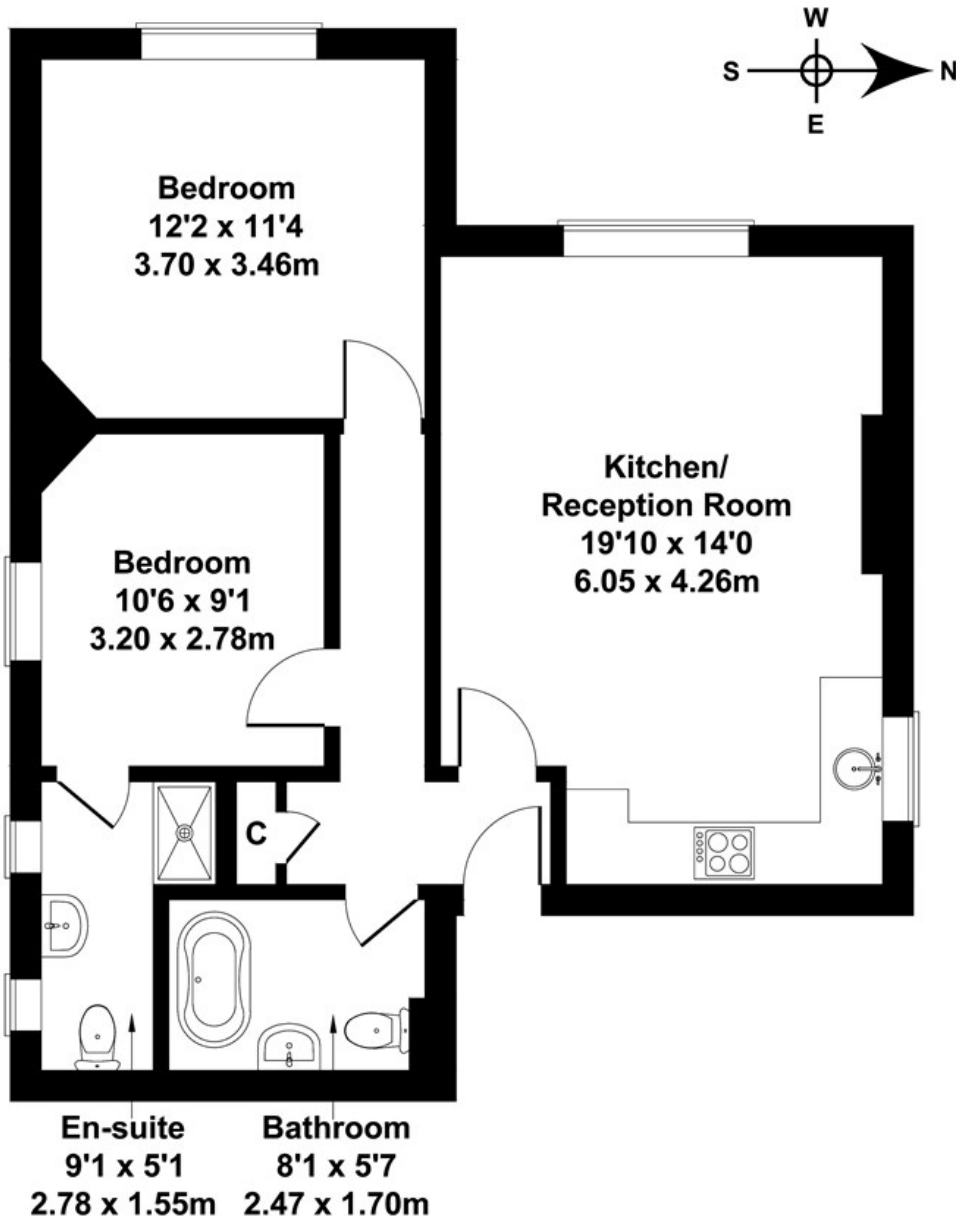
LONG LET. This stunning two-bedroom, two bathroom flat offers a contemporary living space, located moments from the shops and amenities of Ealing and Acton

- EALING COMMON
- TWO BEDROOMS
- CLOSE TO STATION
- TWO BATHROOMS
- OFF STREET PARKING
- LARGE RECEPTION ROOM

£2,099 PCM

Flat C - Gunnersbury Avenue

Approximate Gross Internal Area
678 sq ft - 63 sq m



FIRST FLOOR

Not to Scale. Produced by The Plan Portal 2021
For Illustrative Purposes Only.

Energy Efficiency Rating		
	Current	Potential
<i>Very energy efficient - lower running costs</i>		
(92 plus) A		
(81-91) B		
(69-80) C		
(55-68) D		
(39-54) E		
(21-38) F		
(1-20) G		
<i>Not energy efficient - higher running costs</i>		
England & Wales	EU Directive 2002/91/EC	