



Gilbert Court, W5

Located on the first floor of a highly sought-after purpose-built development in the heart of Ealing, this spacious two-bedroom apartment has been beautifully renovated by its current owners and offers stunning panoramic views over the Ealing skyline.

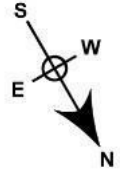
The property features two generously sized double bedrooms, a stylish open-plan kitchen and reception area, a large modern family bathroom, and an allocated garage. Additional benefits include access to a private balcony.

- Two double bedrooms
- Large open plan kitchen/reception
- Immaculate condition
- First floor
- Balcony
- Stunning views
- Lift access
- Allocated garage
- Well-groomed communal gardens
- Close to multiple transports links (North Ealing and Ealing Broadway)

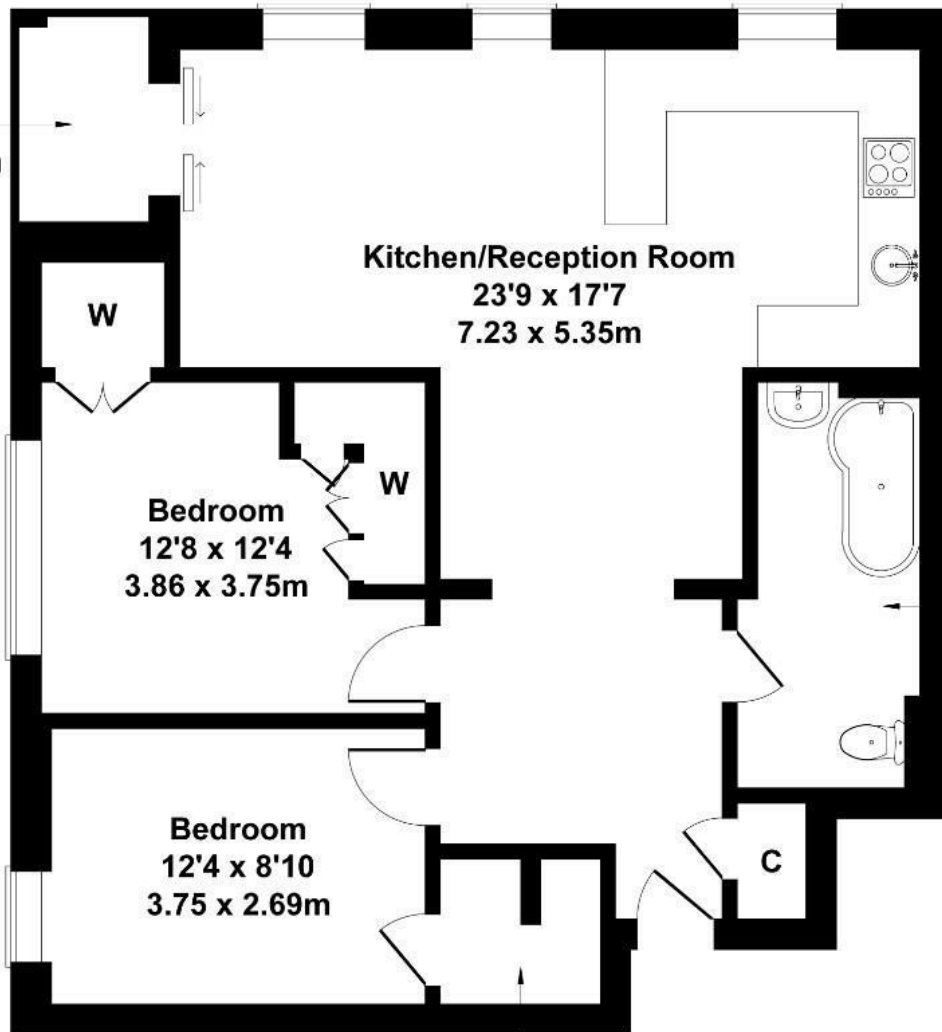
£520,000

Gilbert Court

Approximate Gross Internal Area
797 sq ft - 74 sq m



Balcony
7'2 x 4'5
2.18 x 1.35m



Bathroom
13'0 x 5'11
3.96 x 1.80m

FIRST FLOOR

6'5 x 5'1
1.96 x 1.56m

Not to Scale. Produced by The Plan Portal 2024
For Illustrative Purposes Only.

Energy Efficiency Rating		
	Current	Potential
Very energy efficient - lower running costs		
(92 plus) A		84
(81-91) B		
(69-80) C	71	
(55-68) D		
(39-54) E		
(21-38) F		
(1-20) G		
Not energy efficient - higher running costs		
England & Wales	EU Directive 2002/91/EC	