



Gilbert Court, W5

Located on the first floor of a highly sought-after purpose-built development in the heart of Ealing, this spacious two-bedroom apartment has been beautifully renovated by its current owners and offers stunning panoramic views over the Ealing skyline.

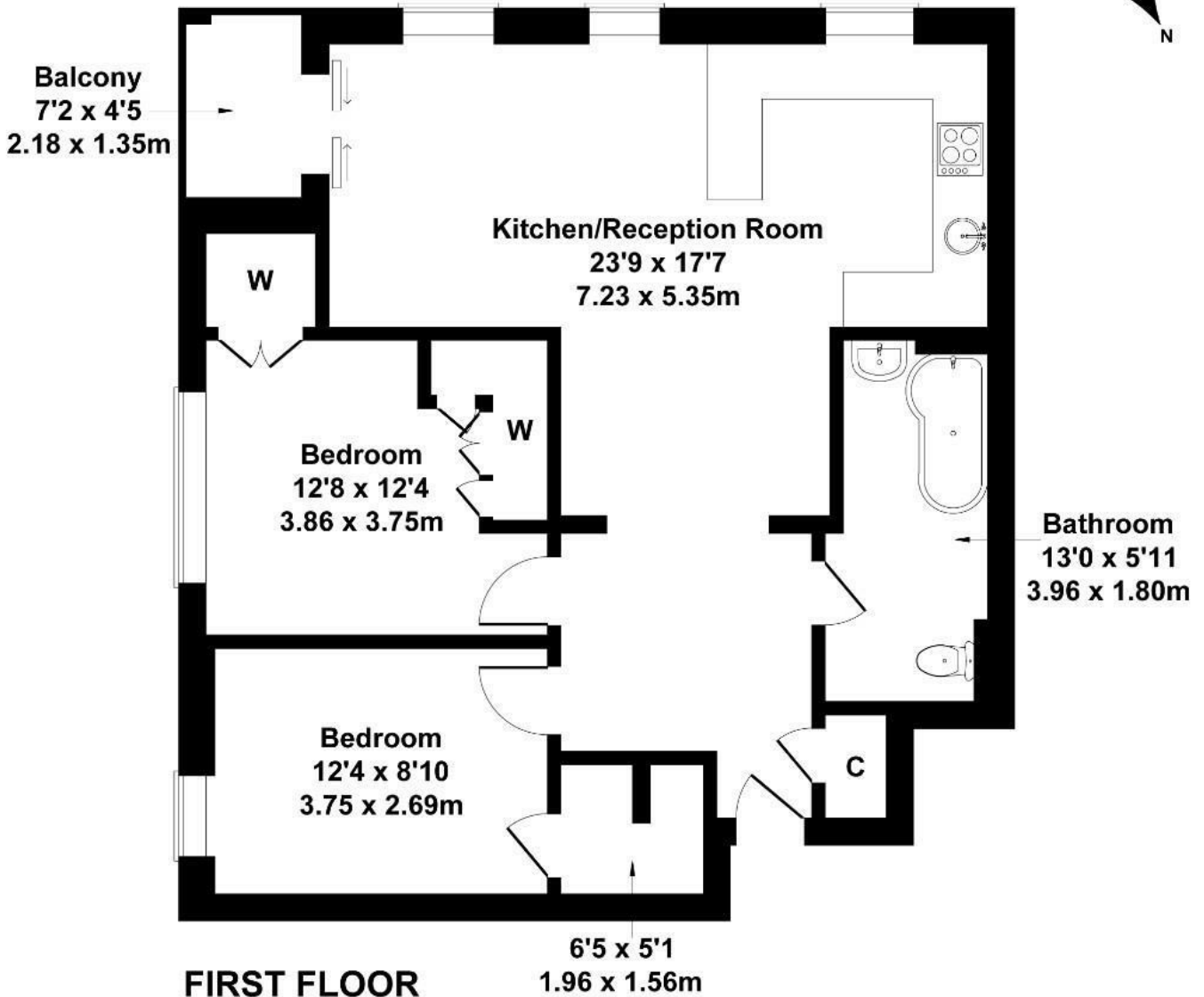
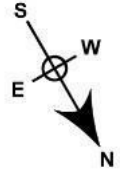
The property features two generously sized double bedrooms, a stylish open-plan kitchen and reception area, a large modern family bathroom, and an allocated garage. Additional benefits include access to a private balcony.

- Two double bedrooms
- Large open plan kitchen/reception
- Immaculate condition
- First floor
- Balcony
- Stunning views
- Lift access
- Allocated garage
- Well-groomed communal gardens
- Close to multiple transports links (North Ealing and Ealing Broadway)

£520,000

Gilbert Court

Approximate Gross Internal Area
797 sq ft - 74 sq m



Not to Scale. Produced by The Plan Portal 2024
For Illustrative Purposes Only.

Energy Efficiency Rating		
	Current	Potential
Very energy efficient - lower running costs		
(92 plus) A		
(81-91) B		
(69-80) C		
(55-68) D		
(39-54) E		
(21-38) F		
(1-20) G		
Not energy efficient - higher running costs		
England & Wales	71	84
EU Directive 2002/91/EC		