



## Holley Road, W3

A stunning newly refurbished ground floor purpose-built one bedroom flat, part of this popular development located near Southfield Recreation Ground Park and within walking distance of the very popular Chiswick High Road, Turnham Green Terrace and Churchfield Road, all offering an abundance of amenities.

The property comes in turnkey condition after an extensive redevelopment and is set up as an open plan kitchen/reception, large double bedrooms and stylish family sized bathroom.

- Large one bedroom
- Ground floor
- Completely refurbished throughout
- Direct access to communal gardens
- Low maintenance costs
- No chain
- Allocated parking space
- Short walk to Stamford brook and Turnham Green

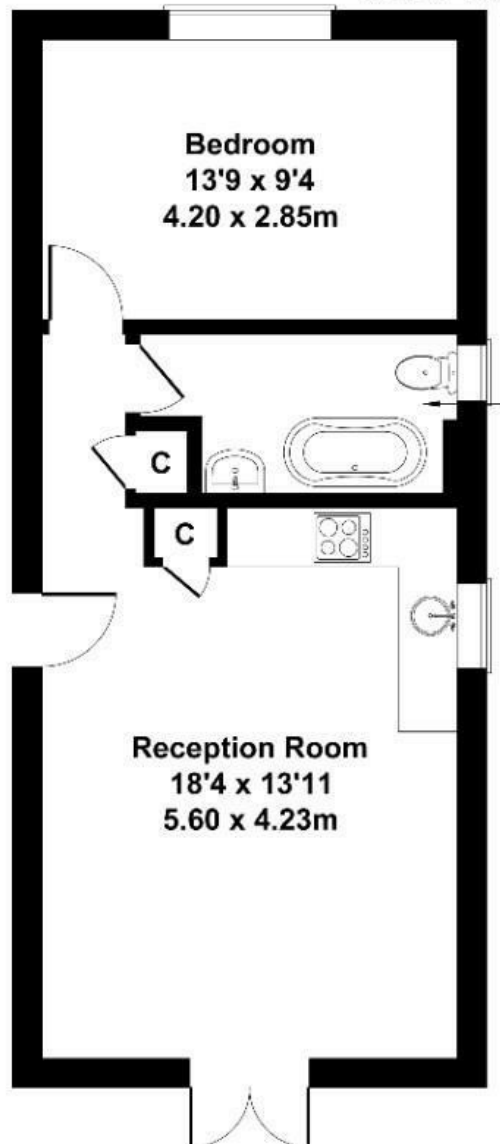
£335,000

# Holley Road

Approximate Gross Internal Area  
474 sq ft - 44 sq m



Bathroom  
10'7 x 5'4  
3.23 x 1.62m



Bedroom  
13'9 x 9'4  
4.20 x 2.85m

Reception Room  
18'4 x 13'11  
5.60 x 4.23m

## GROUND FLOOR

Not to Scale. Produced by The Plan Portal 2025  
For Illustrative Purposes Only.

Energy Efficiency Rating		
	Current	Potential
Very energy efficient - lower running costs		
(92 plus) A		
(81-91) B		
(69-80) C	69	74
(55-68) D		
(39-54) E		
(21-38) F		
(1-20) G		
Not energy efficient - higher running costs		
England & Wales	EU Directive 2002/91/EC	