



Gloucester Road, W3

LONG LET. This two bedroom apartment offers ideal London living benefiting from a bright interior and a great location close to local transport links.

- MODERN INTERIOR
- GREAT LOCATION
- CLOSE TO LOCAL TRANSPORT
- AVAILABLE NOW
- CLOSE TO AMENITIES

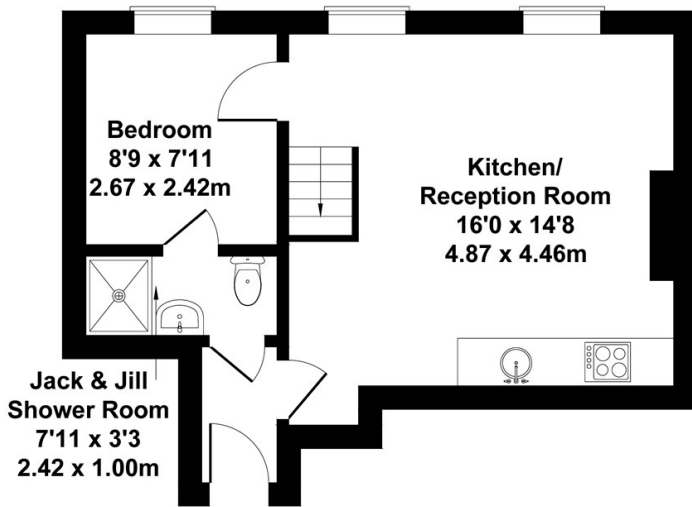
£2,150 PCM

Gloucester Rd

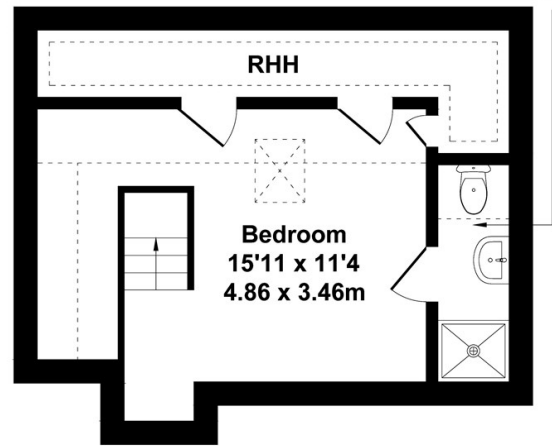
Approximate Gross Internal Area
657 sq ft - 61 sq m



En-suite
9'0 x 2'11
2.75 x 0.90m



SECOND FLOOR



THIRD FLOOR

Not to Scale. Produced by The Plan Portal 2021
For Illustrative Purposes Only.

Energy Efficiency Rating		
	Current	Potential
Very energy efficient - lower running costs		
(92 plus) A		
(81-91) B		
(69-80) C		
(55-68) D		
(39-54) E		
(21-38) F		
(1-20) G		
Not energy efficient - higher running costs		
England & Wales	EU Directive 2002/91/EC	