



## Inglis Road, W5

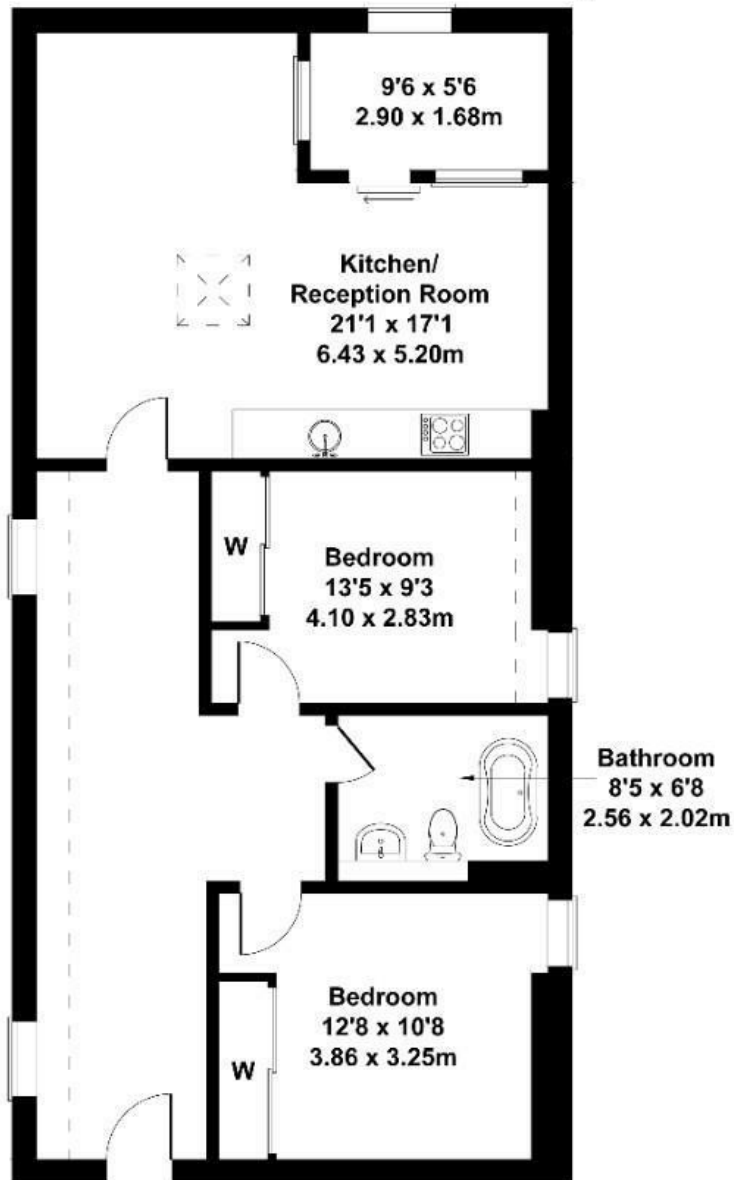
LONG LET. A large two bedroom, one bathroom flat that has been developed to an exemplary standard, centrally located for excellent transport links.

- Available now
- Winter garden
- Modern interior
- Close to local transport and amenities
- Unfurnished
- Great location

£2,350 PCM

# Inglis Road

Approximate Gross Internal Area  
922 sq ft - 86 sq m



## SECOND FLOOR

Not to Scale. Produced by The Plan Portal 2022  
For Illustrative Purposes Only.

Energy Efficiency Rating		
	Current	Potential
Very energy efficient - lower running costs		
(92 plus) A		
(81-91) B		
(69-80) C		
(55-68) D		
(39-54) E		
(21-38) F		
(1-20) G		
Not energy efficient - higher running costs		
England & Wales	EU Directive 2002/91/EC	