



## Churchfield Road, W3

A well-presented three-bedroom duplex apartment set within a period building on the sought-after Churchfield Road.

Occupying the first and second floors and offering close to 900 sq. ft. of space, the property is flooded with natural light.

The flat offers three well-appointed bedrooms and two bathrooms.

The open plan kitchen/reception room are located on the first floor and offer generous dining space too.

- Three double bedrooms
- Two bathrooms
- Period building
- Moments of amenities
- Close to transports
- Sought-after area

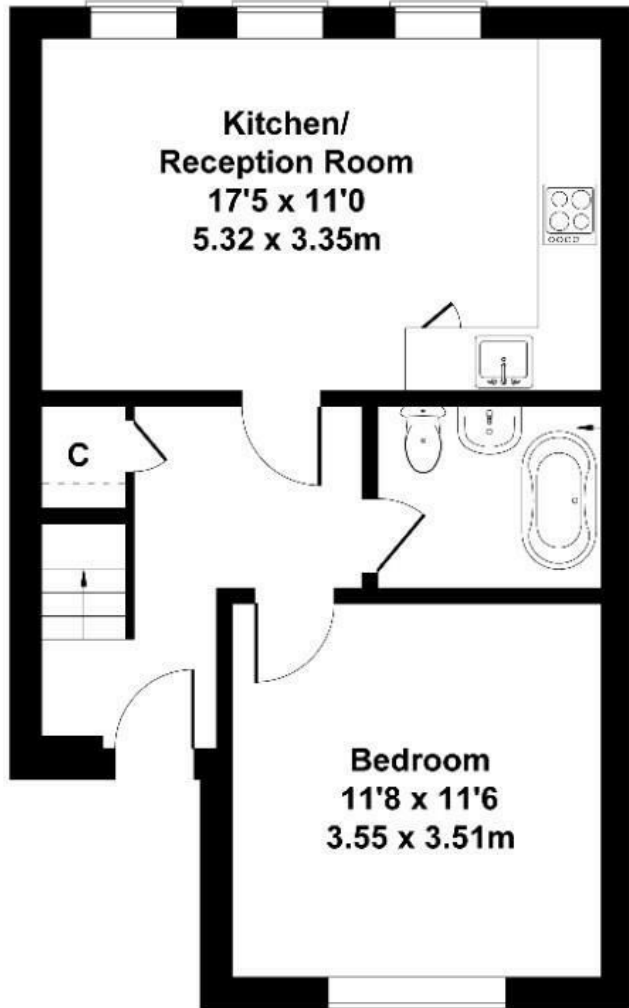
£425,000

# Churchfield Road

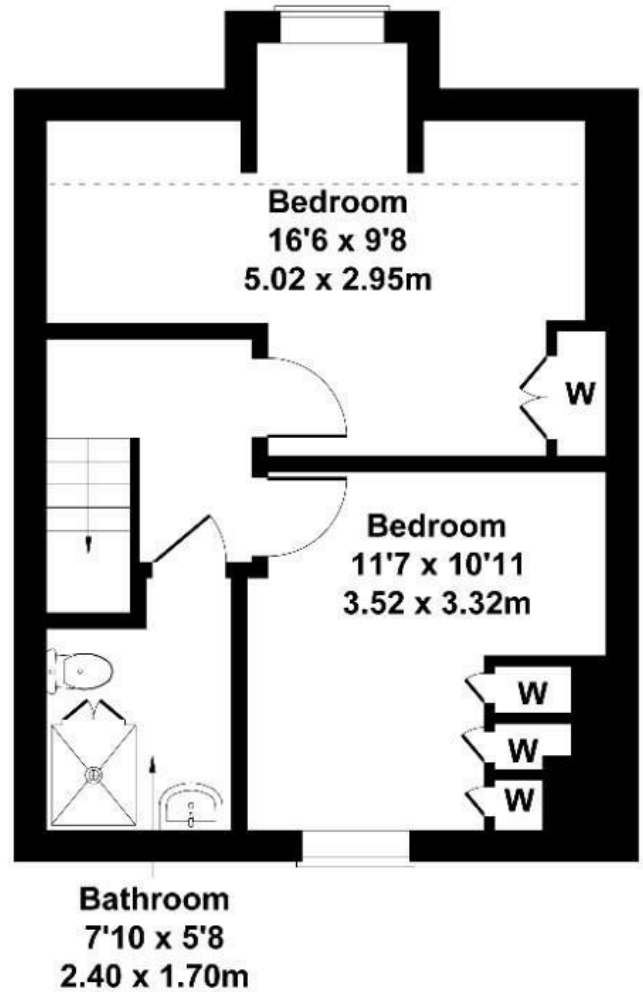
Approximate Gross Internal Area  
861 sq ft - 80 sq m



**Bathroom**  
7'0 x 5'8  
2.13 x 1.72m



**GROUND FLOOR**



**FIRST FLOOR**

Not to Scale. Produced by The Plan Portal 2025  
**For Illustrative Purposes Only.**

Energy Efficiency Rating		
	Current	Potential
Very energy efficient - lower running costs		
(92 plus) <b>A</b>		
(81-91) <b>B</b>		
(69-80) <b>C</b>	77	77
(55-68) <b>D</b>		
(39-54) <b>E</b>		
(21-38) <b>F</b>		
(1-20) <b>G</b>		
Not energy efficient - higher running costs		
<b>England &amp; Wales</b>	EU Directive 2002/91/EC 