

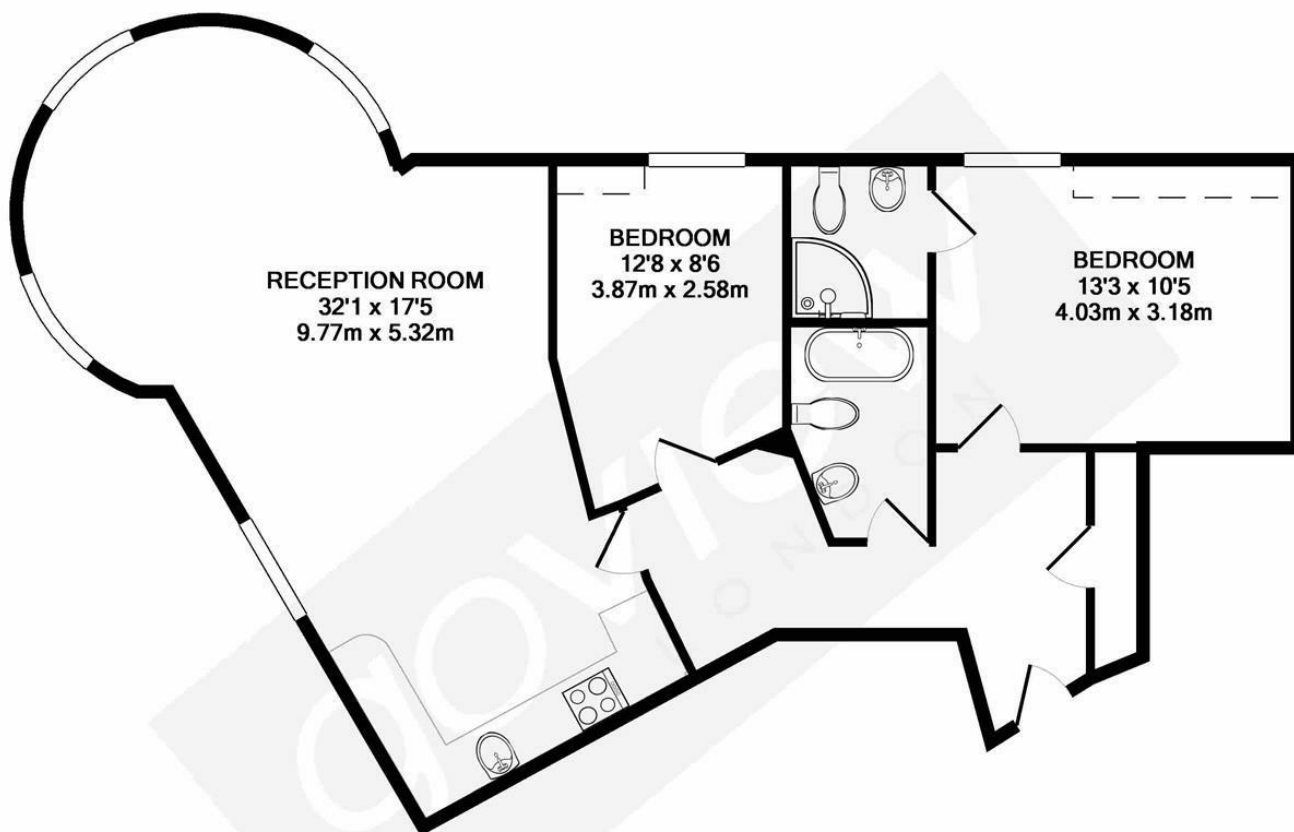


Lynton Road, W3

LONG LET. This refurbished two bedroom, two bathroom apartment is excellently located for amenities and transport links set within a modern development.

- Available now
- Two bedrooms and two bathrooms
- Walking distance to the Elizabeth line
- Close to local amenities
- Early viewings advised
- Open plan living

£1,900 PCM



TOTAL APPROX. FLOOR AREA 802 SQ.FT. (74.5 SQ.M.)

Whilst every attempt has been made to ensure the accuracy of the floor plan contained here, measurements of doors, windows, rooms and any other items are approximate and no responsibility is taken for any error, omission, or mis-statement. This plan is for illustrative purposes only and should be used as such by any prospective purchaser. The services, systems and appliances shown have not been tested and no guarantee as to their operability or efficiency can be given
Made with Metropix ©2019



Energy Efficiency Rating		
	Current	Potential
Very energy efficient - lower running costs		
(92 plus) A	89	89
(81-91) B		
(69-80) C		
(55-68) D		
(39-54) E		
(21-38) F		
(1-20) G		
Not energy efficient - higher running costs		
England & Wales	EU Directive 2002/91/EC 