

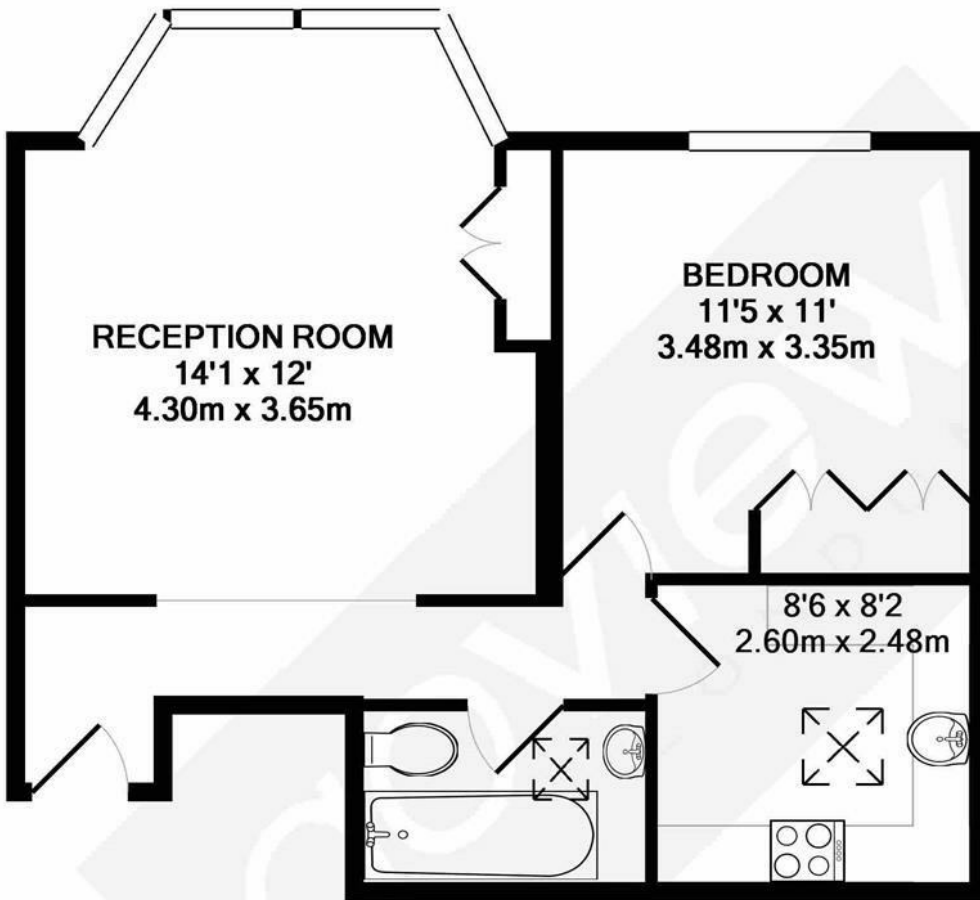


Gunnersbury Ave, W5

LONG LET. Located close to key transport links this spacious one bedroom flat offers superb living space and off street parking.

- LARGE RECEPTION ROOM
- SPACIOUS BEDROOM
- SEPARATE KITCHEN
- GREAT LOCATION
- PARKING
- CLOSE TO EALING COMMON

£1,600 PCM



TOTAL APPROX. FLOOR AREA 482 SQ.FT. (44.7 SQ.M.)

Whilst every attempt has been made to ensure the accuracy of the floor plan contained here, measurements of doors, windows, rooms and any other items are approximate and no responsibility is taken for any error, omission, or mis-statement. This plan is for illustrative purposes only and should be used as such by any prospective purchaser. The services, systems and appliances shown have not been tested and no guarantee as to their operability or efficiency can be given

Made with Metropix ©2017



Energy Efficiency Rating		Current	Potential
<i>Very energy efficient - lower running costs</i>			
(92 plus) A			
(81-91) B			
(69-80) C			
(55-68) D			
(39-54) E			
(21-38) F			
(1-20) G			
<i>Not energy efficient - higher running costs</i>			
England & Wales	EU Directive 2002/91/EC		