



Beech Avenue, W3

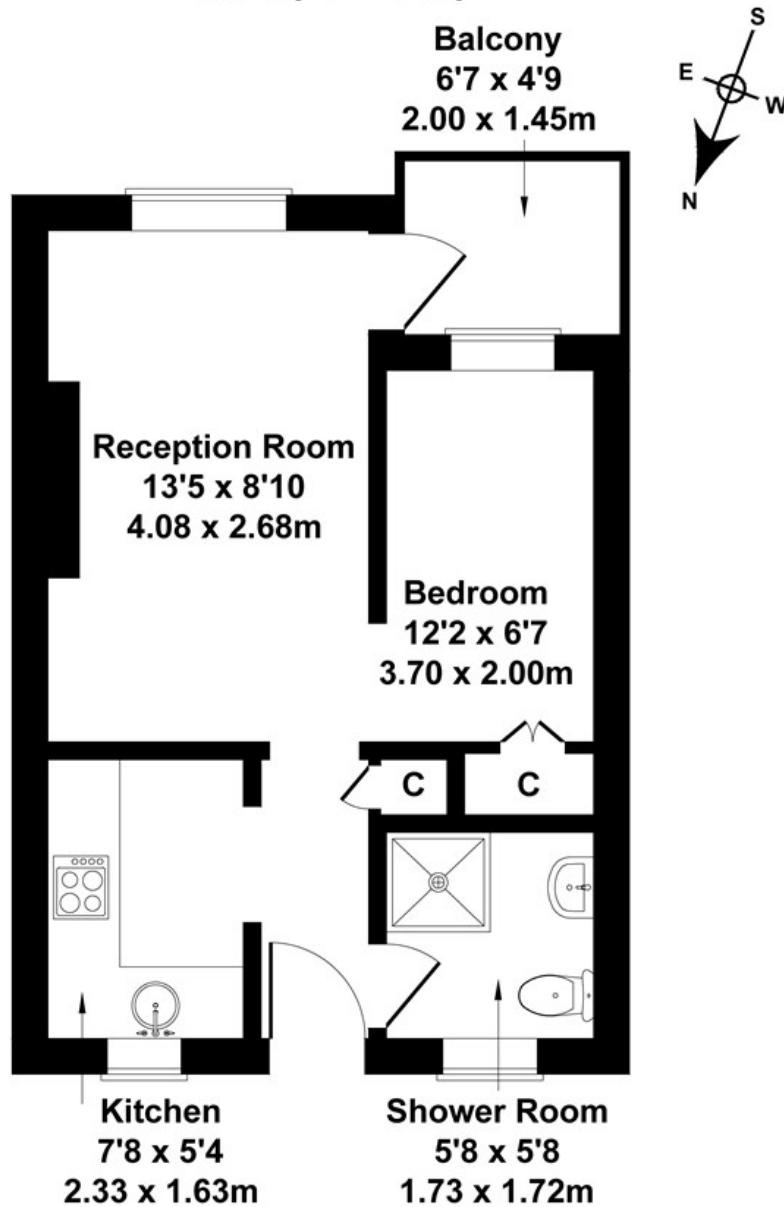
LONG LET. This one bedroom apartment offers ideal London living benefitting from a bright interior and a great location close to local transport links.

- Available 25th May
- Modern interior
- Separate Kitchen
- Good location close to transport and amenities

£1,350 PCM

Beech Avenue

Approximate Gross Internal Area
308 sq ft - 29 sq m



FIRST FLOOR

Not to Scale. Produced by The Plan Portal 2023
For Illustrative Purposes Only.

Energy Efficiency Rating		
	Current	Potential
Very energy efficient - lower running costs		
(92 plus) A		
(81-91) B		
(69-80) C	76	79
(55-68) D		
(39-54) E		
(21-38) F		
(1-20) G		
Not energy efficient - higher running costs		
England & Wales	EU Directive 2002/91/EC	