



Fulham Palace Road, W6

This fabulous two-bedroom flat is located on the top floor of a popular mansion block building moments from Hammersmith tube station.

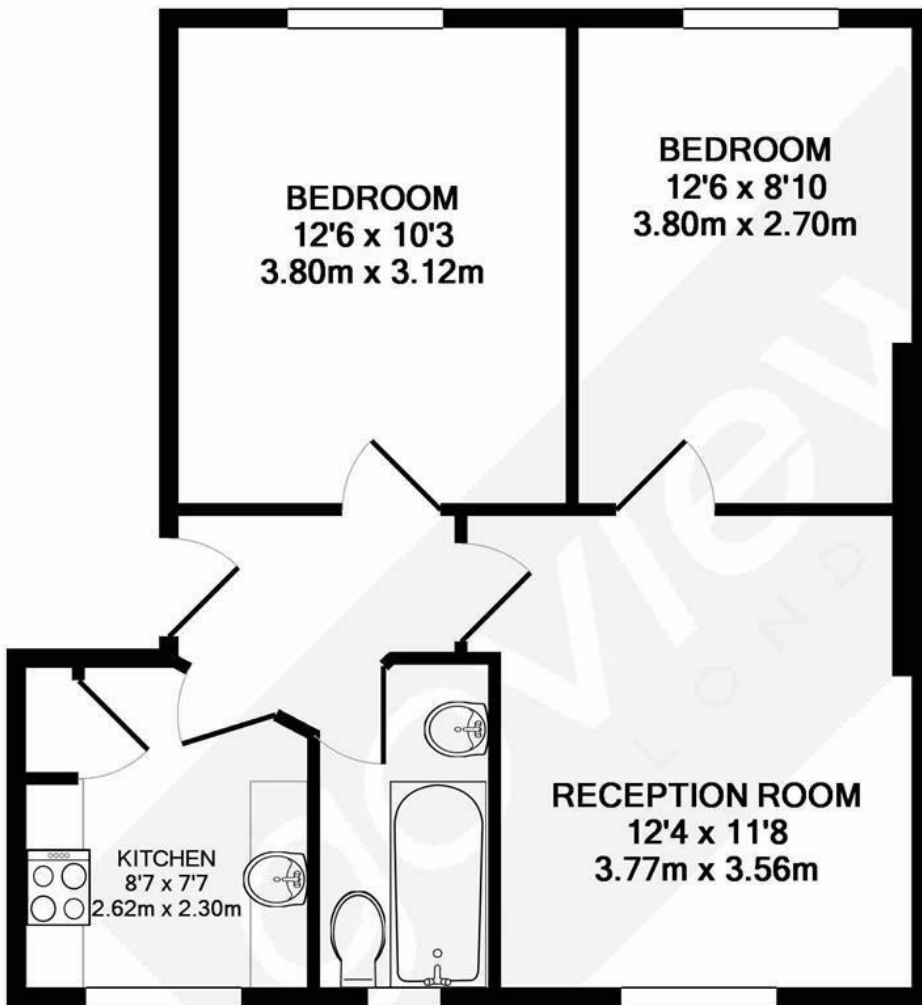
The property comprises a reception room with space for dining, two spacious bedrooms, fitted kitchen and a large bathroom.

The apartment further benefits from site parking which can be secured by permit.

The property is being sold with tenants in situ and as a result would only suit investors.

- Two double bedrooms
- Spacious reception room
- Top floor
- Close to local transports
- Great location
- Investors only (tenants in situ)

£450,000



TOTAL APPROX. FLOOR AREA 501 SQ.FT. (46.6 SQ.M.)

Whilst every attempt has been made to ensure the accuracy of the floor plan contained here, measurements of doors, windows, rooms and any other items are approximate and no responsibility is taken for any error, omission, or mis-statement. This plan is for illustrative purposes only and should be used as such by any prospective purchaser. The services, systems and appliances shown have not been tested and no guarantee as to their operability or efficiency can be given

Made with Metropix ©2018

Energy Efficiency Rating		Current	Potential
Very energy efficient - lower running costs			
(92 plus) A			
(81-91) B			
(69-80) C			
(55-68) D		64	
(39-54) E			
(21-38) F			
(1-20) G			
Not energy efficient - higher running costs			
England & Wales		EU Directive 2002/91/EC	