



Madeley Road, W5

A very appealing one bedroom ground floor maisonette measuring approx. 425 sq ft and located on the sought after Madeley Road, a popular residential road that connects to Ealing Broadway within a five minute walk.

The property comes in good order and benefits from no onward chain, a long lease of 138 years and low management costs.

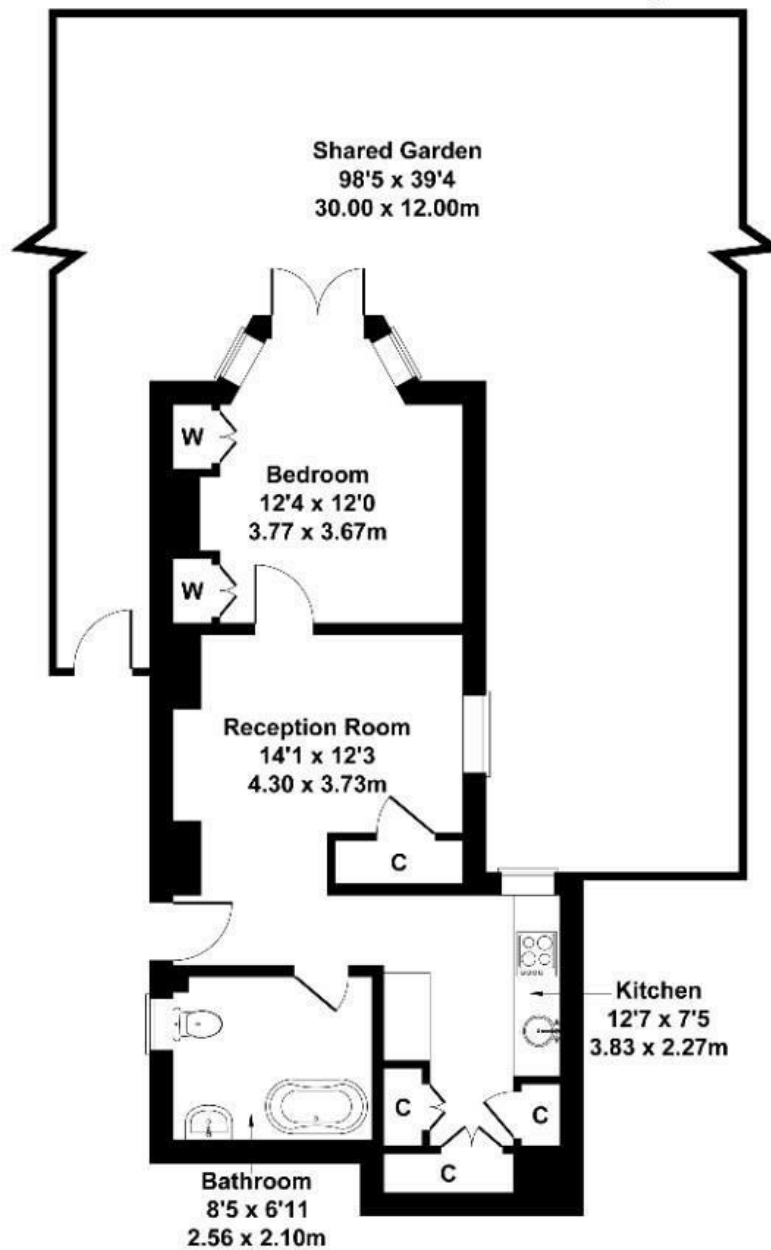
You are just moments away from Ealing Broadway centre with its variety of shops, restaurants and cafes as well as a plethora of transport link options.

- Ground floor maisonette
- Within five minutes of Ealing Broadway
- Large communal garden
- Separate kitchen
- Close to transport links
- No onward chain

£325,000

Madeley Road

Approximate Gross Internal Area
452 sq ft - 42 sq m



GROUND FLOOR

Not to Scale. Produced by The Plan Portal 2025
For Illustrative Purposes Only.

Energy Efficiency Rating		
	Current	Potential
Very energy efficient - lower running costs		
(92 plus) A		
(81-91) B		
(69-80) C		
(55-68) D	60	76
(39-54) E		
(21-38) F		
(1-20) G		
Not energy efficient - higher running costs		
England & Wales		EU Directive 2002/91/EC