



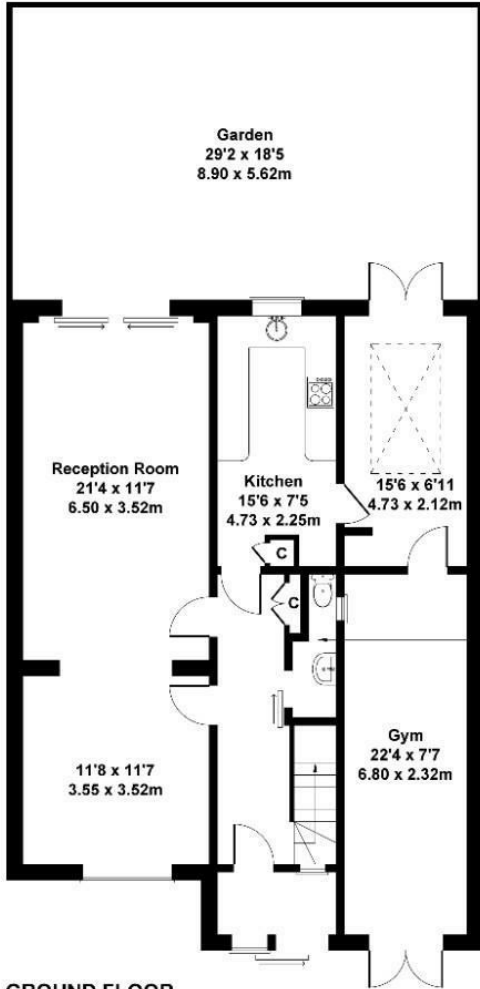
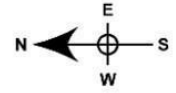
## Cowper Road, W3

Long Let. Situated on the desirable Cowper Road just off Churchfield road, this unique five-bedroom house presents an exceptional opportunity for families seeking a modern and spacious home. With a high specification interior, this property has been thoughtfully designed to meet the needs of contemporary living while providing a warm and inviting atmosphere.

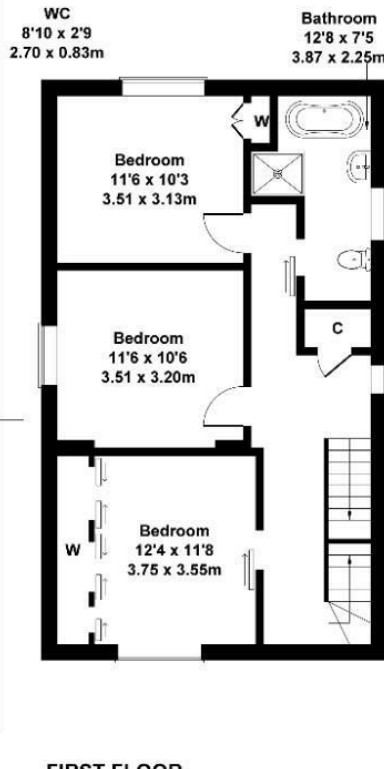
- Desirable location
- Part furnished
- Great for local amenities and transport
- Off street parking
- High spec
- Early viewing advised

£5,000

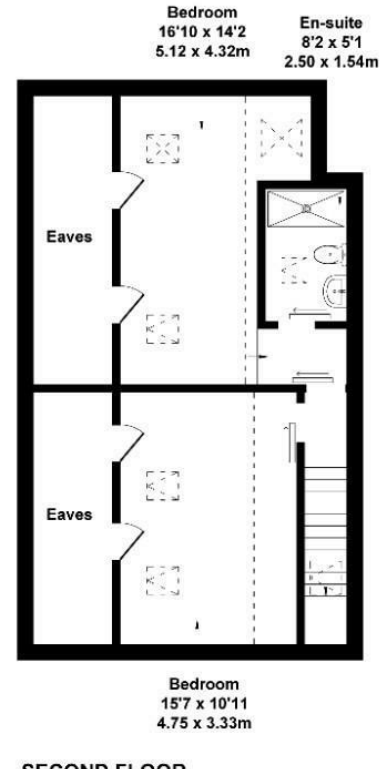
**Cowper Road**  
 Approximate Gross Internal Area  
 2120 sq ft - 197 sq m



**GROUND FLOOR**



**FIRST FLOOR**



**SECOND FLOOR**

Not to Scale. Produced by The Plan Portal 2025  
 For Illustrative Purposes Only.

Energy Efficiency Rating		
	Current	Potential
<i>Very energy efficient - lower running costs</i>		
(92 plus) <b>A</b>		
(81-91) <b>B</b>		
(69-80) <b>C</b>		
(55-68) <b>D</b>		
(39-54) <b>E</b>		
(21-38) <b>F</b>		
(1-20) <b>G</b>		
<i>Not energy efficient - higher running costs</i>		
<b>England &amp; Wales</b>	EU Directive 2002/91/EC	