



## Churchfield Road, W3

A well-presented two-bedroom duplex apartment set within a period building on the sought-after Churchfield Road.

Occupying the first and second floors and offering close to 900 sq. ft. of space, the property is flooded with natural light.

The flat offers two well-appointed bedrooms and a family bathroom on the first floor.

On the second floor, the reception area boasts high ceilings which gives a feel of spaciousness.

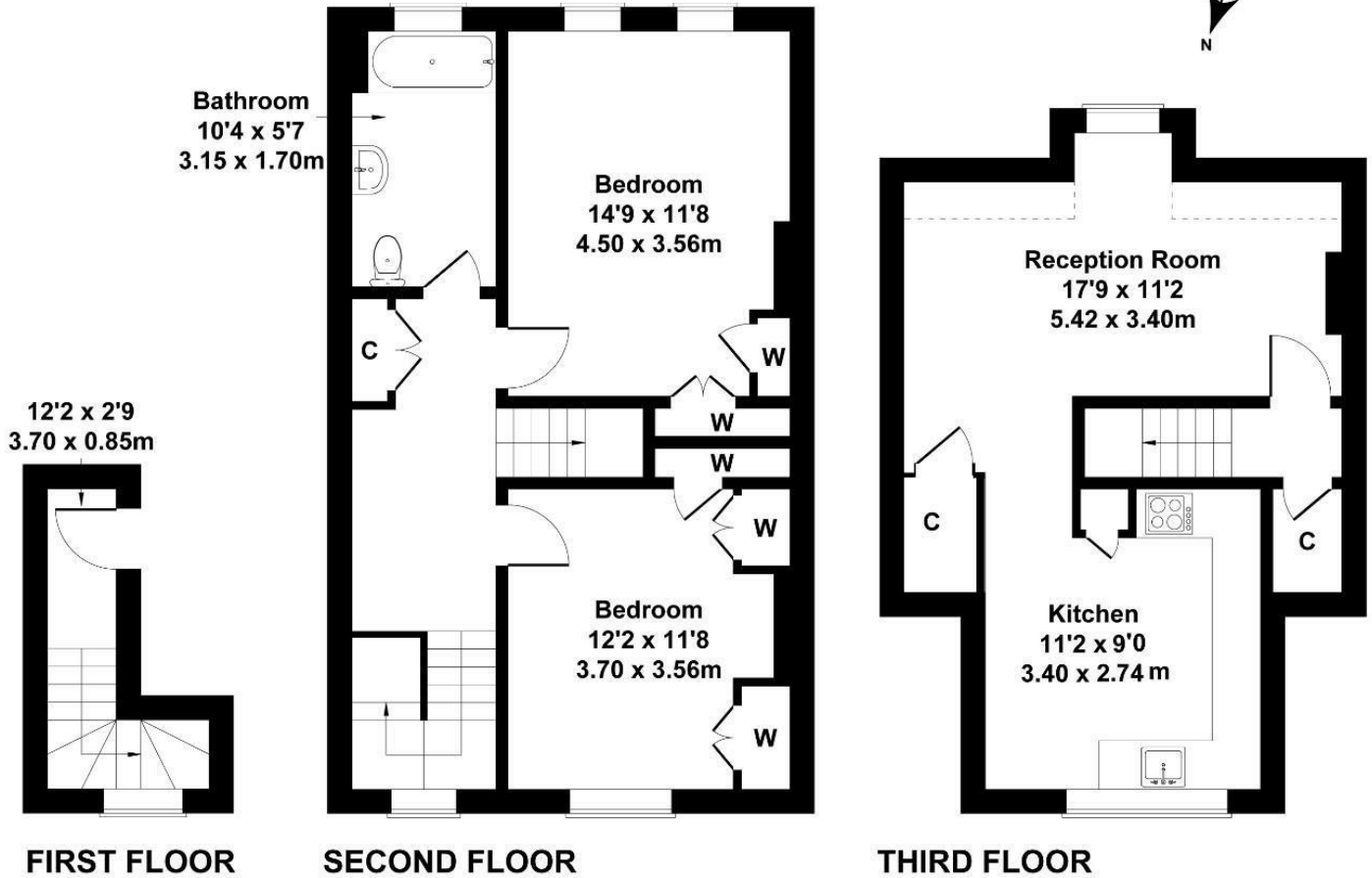
There is also a separate kitchen.

- Two double bedrooms
- Duplex apartment
- Period building
- Moments from amenities
- Close to public transports
- Sought-after area

Guide Price £450,000

# Churchfield Road

Approximate Gross Internal Area  
893 sq Ft / 83 sq M



Not to Scale. Produced by The Plan Portal 2025  
For Illustrative Purposes Only.

Energy Efficiency Rating		
	Current	Potential
Very energy efficient - lower running costs		
(92 plus) <b>A</b>		
(81-91) <b>B</b>		
(69-80) <b>C</b>		76
(55-68) <b>D</b>	54	
(39-54) <b>E</b>		
(21-38) <b>F</b>		
(1-20) <b>G</b>		
Not energy efficient - higher running costs		
<b>England &amp; Wales</b>	EU Directive 2002/91/EC	