



Gilbert court , W5

Long Let. Situated in the desirable Gilbert Court, W5, this charming two-bedroom apartment offers a perfect blend of modern living and classic appeal. This property has been recently refurbished to a high standard, ensuring a comfortable and stylish home for its new occupants.

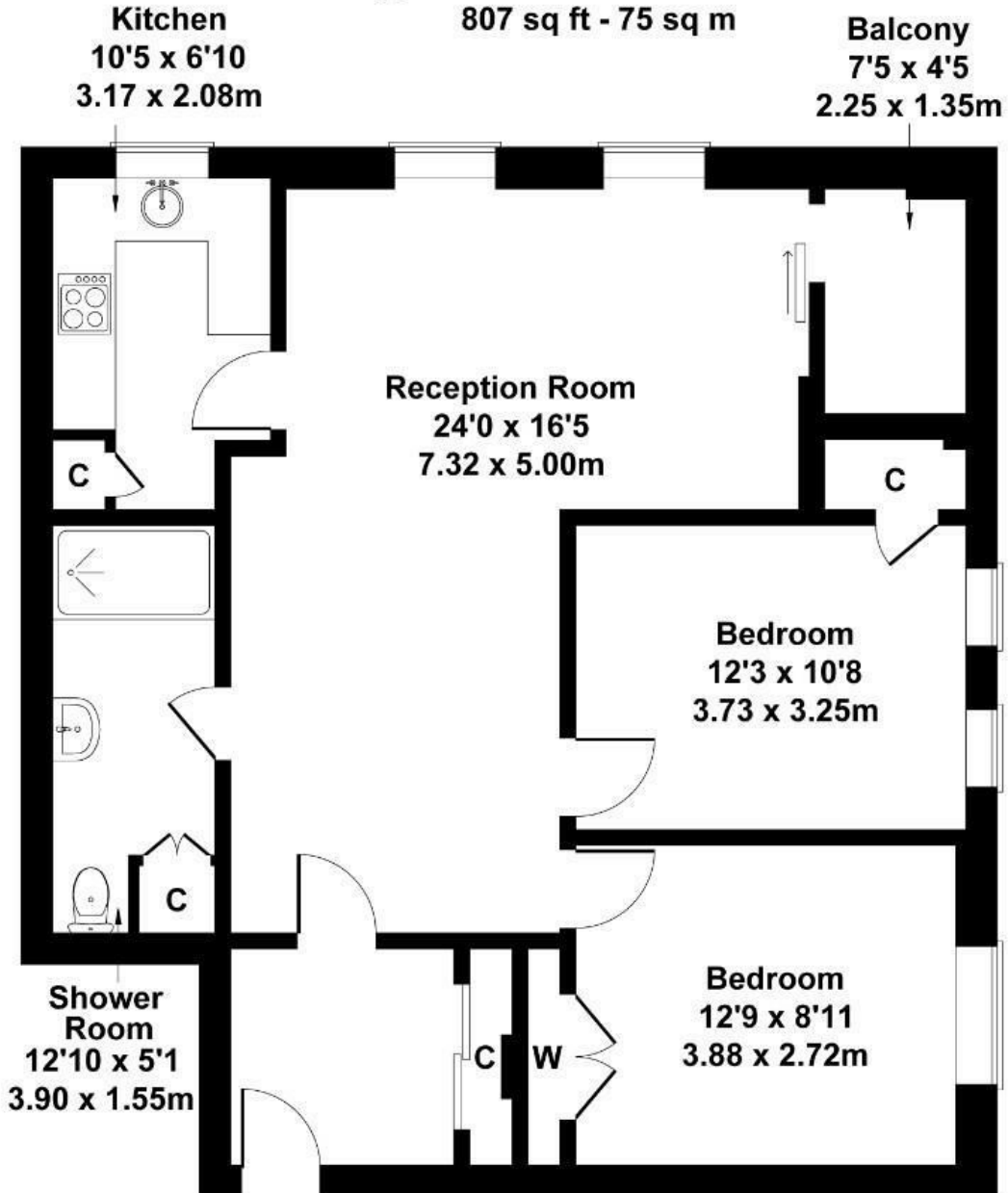
- Purpose built
- Recently refurbished to a high standard
- Private garage and permit parking
- Great transport links
- Available from 20th March 2025
- Early viewings advised

£2,400

Gilbert Court

Approximate Gross Internal Area

807 sq ft - 75 sq m



THIRD FLOOR

Not to Scale. Produced by The Plan Portal 2025
For Illustrative Purposes Only.

Energy Efficiency Rating		Current	Potential
Very energy efficient - lower running costs			
(92 plus) A			
(81-91) B			
(69-80) C			
(55-68) D			
(39-54) E			
(21-38) F			
(1-20) G			
Not energy efficient - higher running costs			
England & Wales		EU Directive 2002/91/EC	