



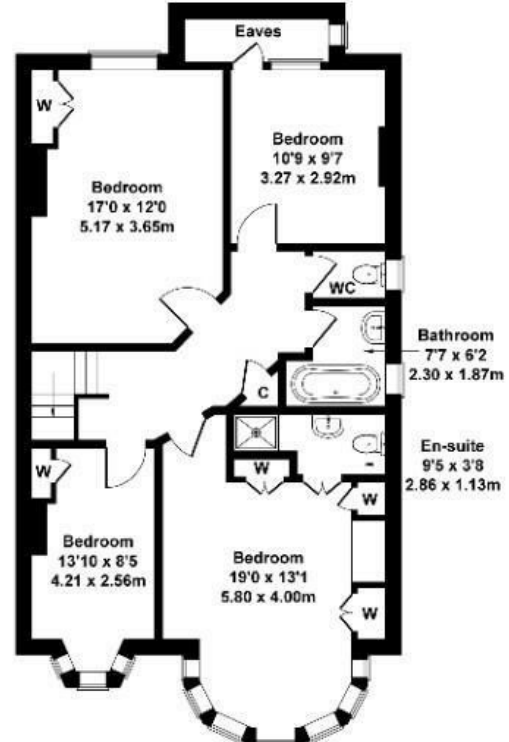
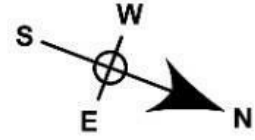
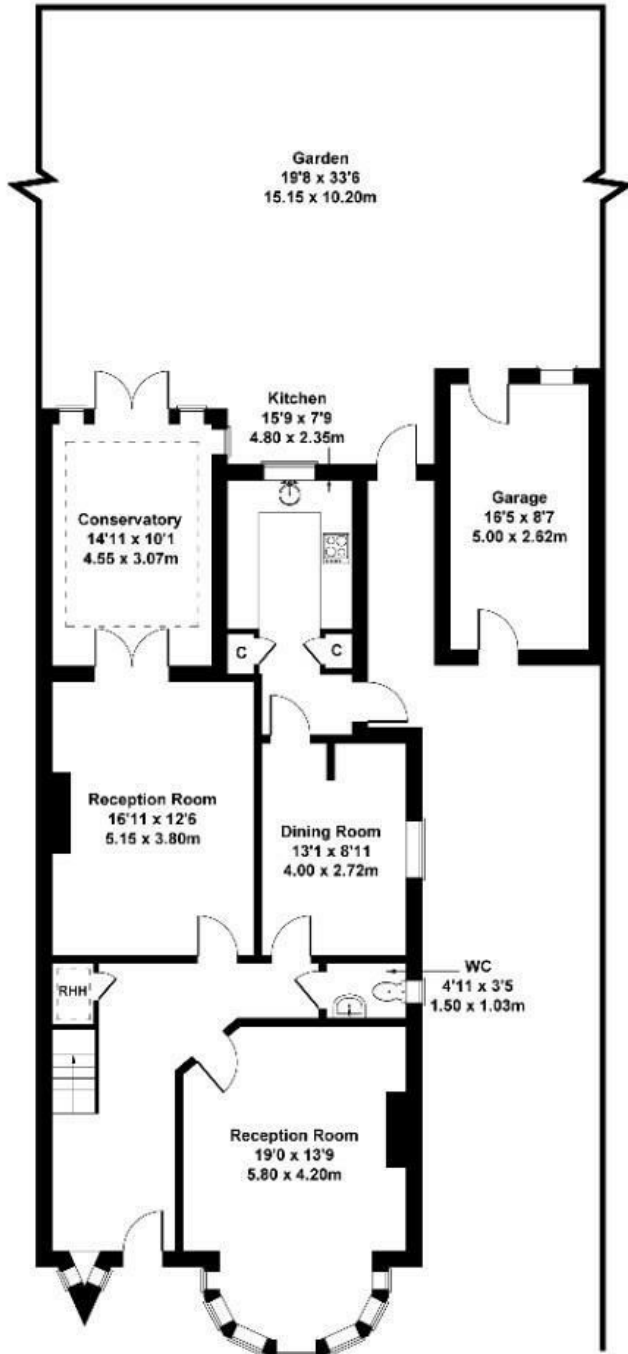
Carbery Avenue, Acton

New to the market for the first time in over 40 years is this elegant and character-filled four-bedroom, two-bathroom semi-detached home, offering over 2,000 sq. ft. of well-appointed living space. Nestled in a desirable residential area, this 1920s property seamlessly blends period charm with modern comforts, making it an ideal home for families and discerning buyers alike.

- Semi detached house
- Four bedrooms
- South West facing garden
- No chain
- Two receptions
- Over 2000 Sq ft
- Garage
- Huge potential to extend subject to all usual consents
- Off street parking
- Two bathrooms

£1,335,000

Carbery Avenue
 Approximate Gross Internal Area
 2034 sq ft - 189 sq m



Not to Scale. Produced by The Plan Portal 2025
 For Illustrative Purposes Only.

Energy Efficiency Rating		Current	Potential
Very energy efficient - lower running costs			
(92 plus) A			
(81-91) B			
(69-80) C			
(55-68) D			
(39-54) E		47	68
(21-38) F			
(1-20) G			
Not energy efficient - higher running costs			
England & Wales	EU Directive 2002/91/EC		