



Craig House, W13

A unique two double bedroom apartment prominently located on the top floor of the popular Craig House development that is located on Ealing Broadway/West Ealing borders.

- Purpose built flat
- Top floor flat with lift
- Secure off street parking
- No chain
- Lease 973 years
- Two double bedrooms
- Two bathrooms (one en-suite)
- Unique panoramic views
- Large communal roof terrace
- Close to multiple transport links

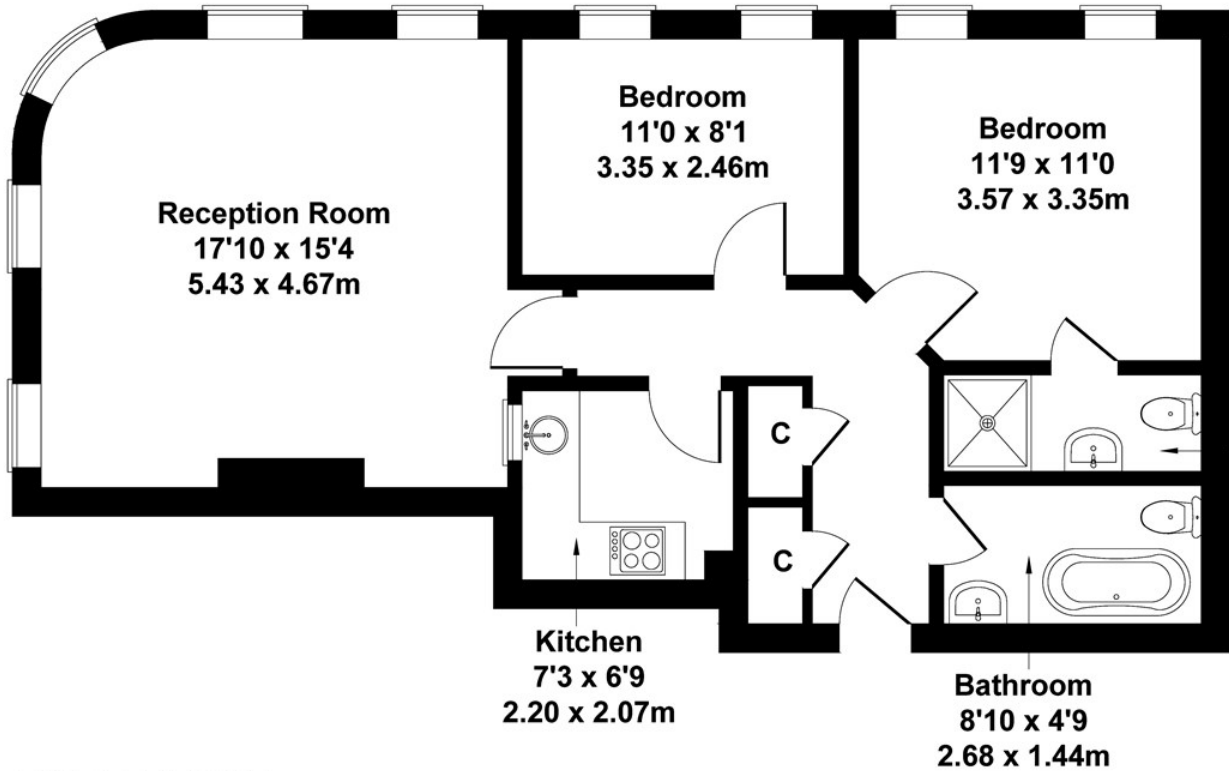
£450,000

Craig House

Approximate Gross Internal Area
700 sq ft - 65 sq m



En-suite
8'10 x 3'3
2.68 x 1.00m



THIRD FLOOR

Not to Scale. Produced by The Plan Portal 2022
For Illustrative Purposes Only.

Energy Efficiency Rating		Current	Potential
Very energy efficient - lower running costs			
(92 plus) A			
(81-91) B			
(69-80) C			
(55-68) D			
(39-54) E			
(21-38) F			
(1-20) G			
Not energy efficient - higher running costs			
England & Wales		50	79
	EU Directive 2002/91/EC		