

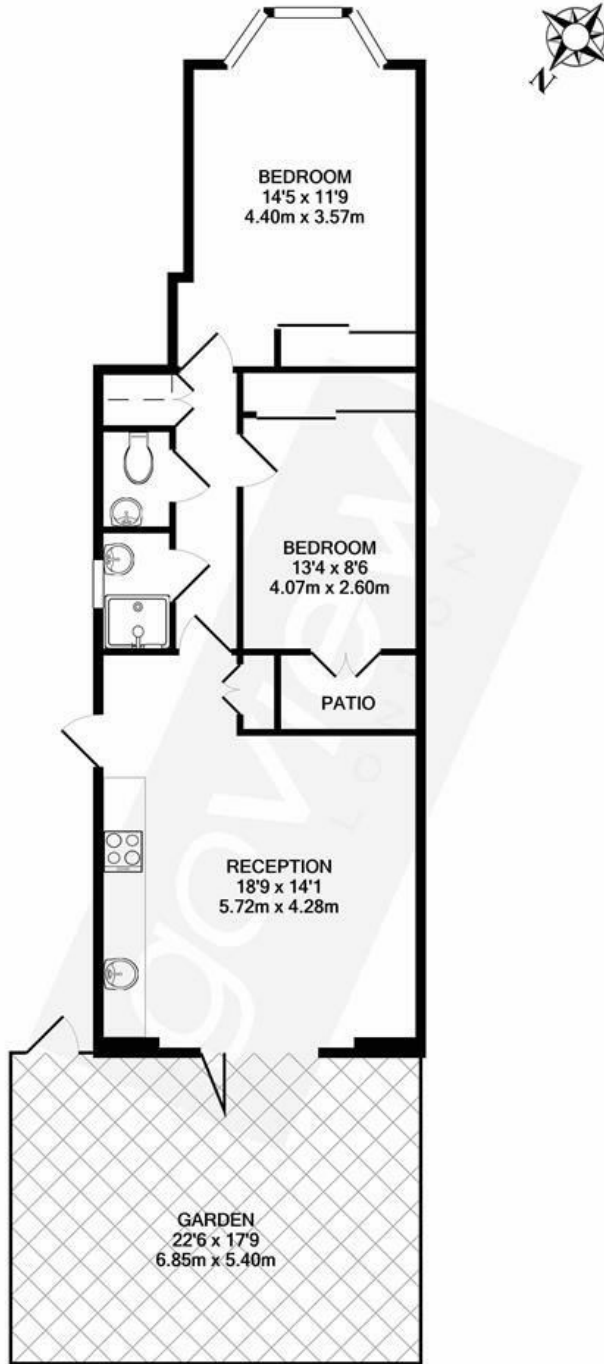


## Wells House Road, NW10

LONG LET. This stunning two bedroom garden flat boasts a modern interior with an additional patio area located close to transport links.

- MODERN INTERIOR
- CLOSE TO LOCAL TRANSPORT
- LARGE GARDEN
- TWO DOUBLE BEDROOMS
- PATIO
- CLOSE TO LOCAL AMENITIES

£1,900 PCM



TOTAL APPROX. FLOOR AREA 663 SQ.FT. (61.6 SQ.M.)

Whilst every attempt has been made to ensure the accuracy of the floor plan contained here, measurements of doors, windows, rooms and any other items are approximate and no responsibility is taken for any error, omission, or mis-statement. This plan is for illustrative purposes only and should be used as such by any prospective purchaser. The services, systems and appliances shown have not been tested and no guarantee as to their operability or efficiency can be given  
Made with Metropix ©2020

Energy Efficiency Rating		
	Current	Potential
<i>Very energy efficient - lower running costs</i>		
(92 plus) <b>A</b>		
(81-91) <b>B</b>		
(69-80) <b>C</b>		
(55-68) <b>D</b>		
(39-54) <b>E</b>		
(21-38) <b>F</b>		
(1-20) <b>G</b>		
<i>Not energy efficient - higher running costs</i>		
<b>England &amp; Wales</b>	EU Directive 2002/91/EC	