

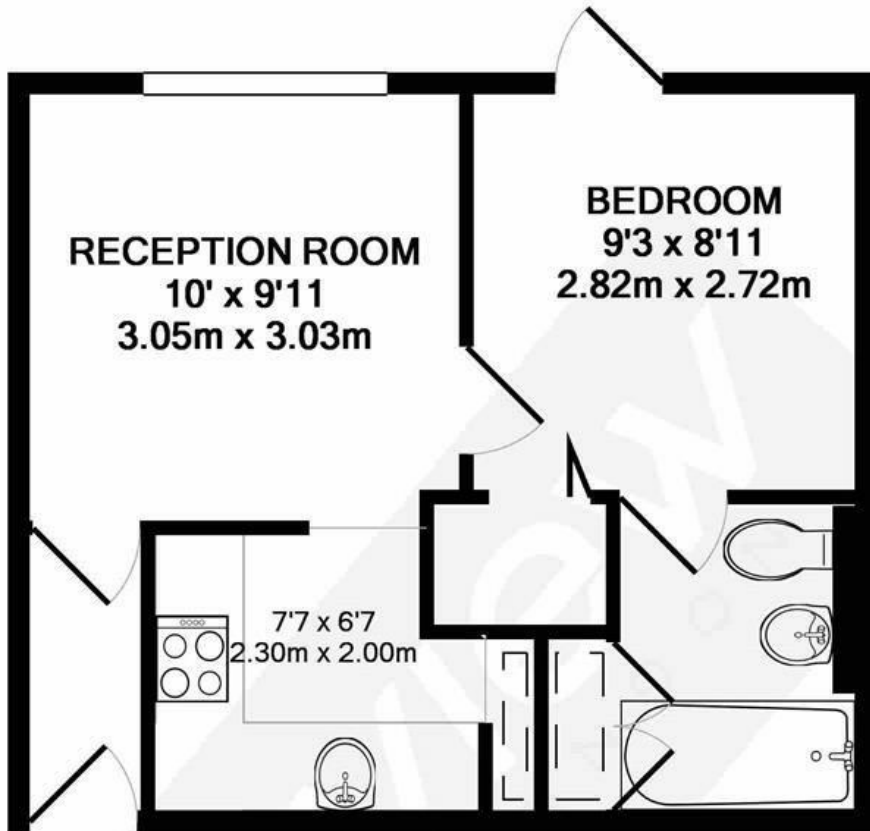


## Pursewardens Close, W13

LONG LET. This smart one bedroom apartment is located in the heart of Ealing boasts a modern interior with quality fixtures and fittings.

- ONE BEDROOM FLAT
- ALLOCATED PARKING POD
- GREAT LOCATION
- PURPOSE BUILT BLOCK
- CLOSE TO AMENITIES
- GROUND FLOOR

£1,450 PCM



TOTAL APPROX. FLOOR AREA 333 SQ.FT. (30.9 SQ.M.)

Whilst every attempt has been made to ensure the accuracy of the floor plan contained here, measurements of doors, windows, rooms and any other items are approximate and no responsibility is taken for any error, omission, or mis-statement. This plan is for illustrative purposes only and should be used as such by any prospective purchaser. The services, systems and appliances shown have not been tested and no guarantee as to their operability or efficiency can be given

Made with Metropix ©2017

Energy Efficiency Rating		Current	Potential
Very energy efficient - lower running costs			
(92 plus) A			
(81-91) B			77
(69-80) C			
(55-68) D		58	
(39-54) E			
(21-38) F			
(1-20) G			
Not energy efficient - higher running costs			
England & Wales		EU Directive 2002/91/EC	