

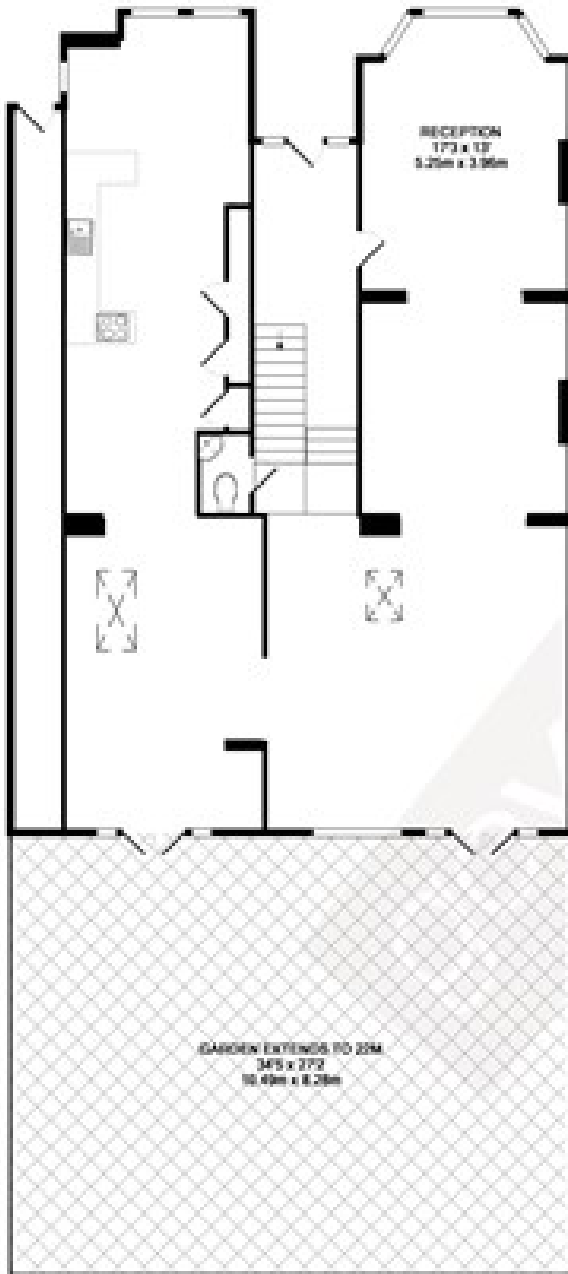


The Avenue, W13

LONG LET. This truly stunning five bedroom double fronted, detached house which has been refurbished to the highest of standards and is situated on a prime tree lined street in the heart of West Ealing.

- DETACHED HOUSE
- NEWLY REFURBISHED
- FIVE BEDROOMS
- LARGE ENTERTAINING SPACE
- BEAUTIFUL GARDEN
- OFF STREET PARKING

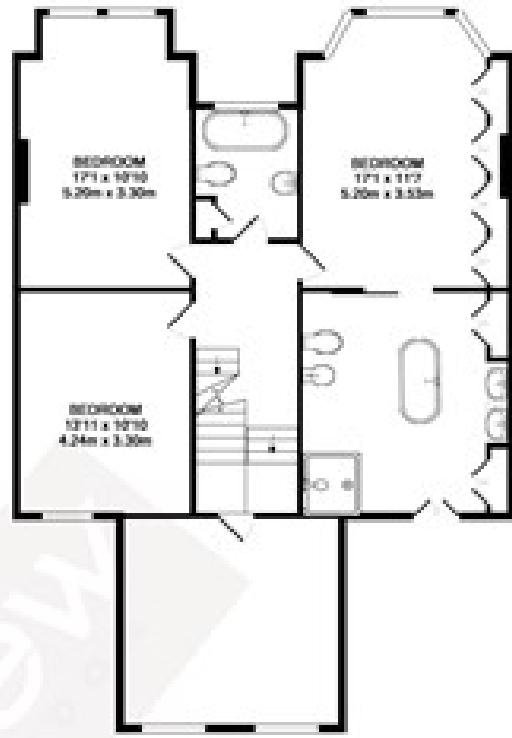
£5,800 PCM



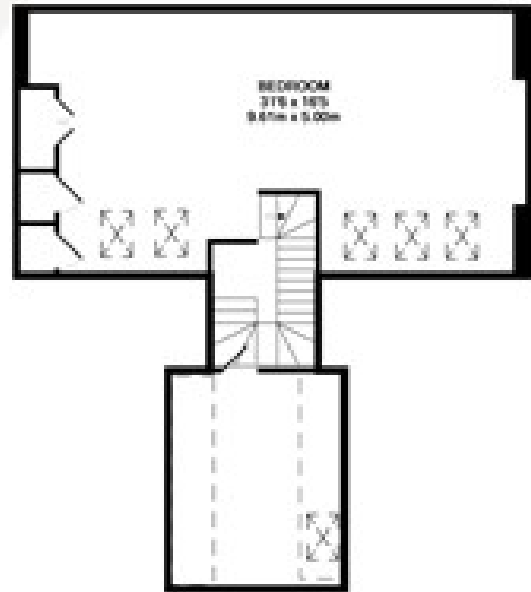
GROUND FLOOR
APPROX. FLOOR
AREA: 1524 SQ FT
(140.8 SQ M)

TOTAL APPROX. FLOOR AREA: 1524 SQ FT (140.8 SQ M)

Notes: Every attempt has been made to ensure the accuracy of the floor plan contained here. Measurements of items, fixtures, fittings and any other items are approximate and no responsibility is taken for any error, omission, or misstatement. This plan is for illustrative purposes only and should not be used as such for any specific purchase. These drawings, fixtures and appliances should have not been used and no guarantee as to their operability or efficiency can be given.
Scale: as shown (1:50)



1ST FLOOR
APPROX. FLOOR
AREA: 506 SQ FT
(46.7 SQ M)



2ND FLOOR
APPROX. FLOOR
AREA: 108 SQ FT
(10.0 SQ M)

Energy Efficiency Rating		Current	Potential
Very energy efficient - lower running costs			
(92 plus) A			
(81-91) B			
(69-80) C			72
(55-68) D		46	
(39-54) E			
(21-38) F			
(1-20) G			
Not energy efficient - higher running costs			
England & Wales		EU Directive 2002/91/EC	