

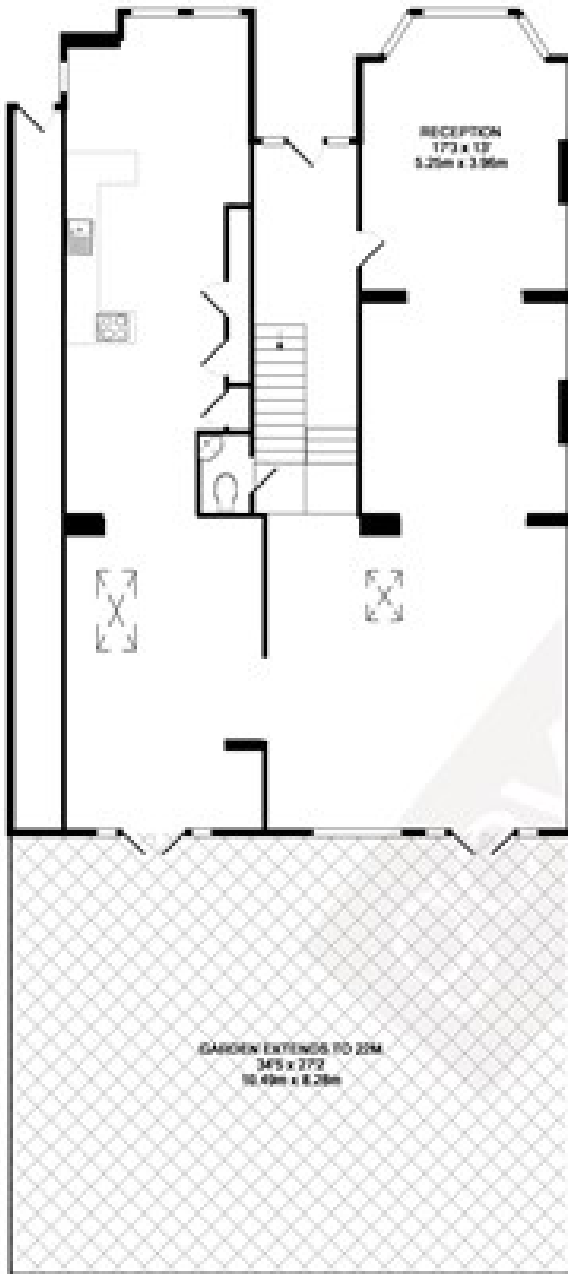


## The Avenue, W13

LONG LET. This truly stunning five bedroom double fronted, detached house which has been refurbished to the highest of standards and is situated on a prime tree lined street in the heart of West Ealing.

- DETACHED HOUSE
- NEWLY REFURBISHED
- FIVE BEDROOMS
- LARGE ENTERTAINING SPACE
- BEAUTIFUL GARDEN
- OFF STREET PARKING

£5,800 PCM

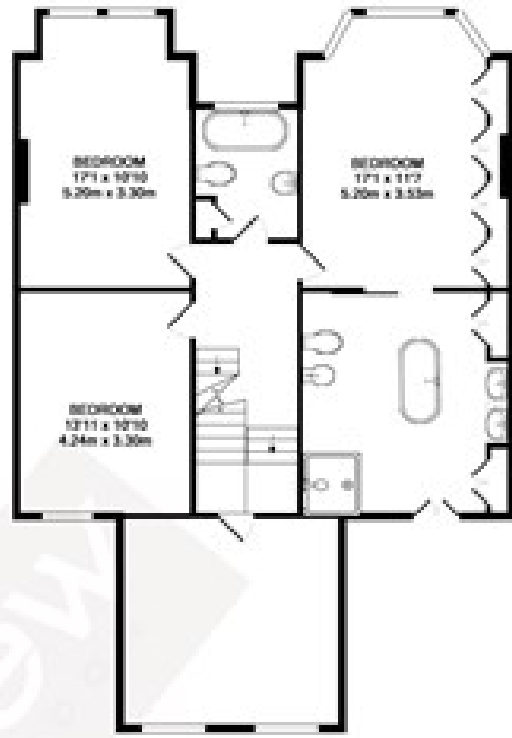


GROUND FLOOR  
APPROX. FLOOR  
AREA: 1524 SQ FT  
(140.8 SQ M)

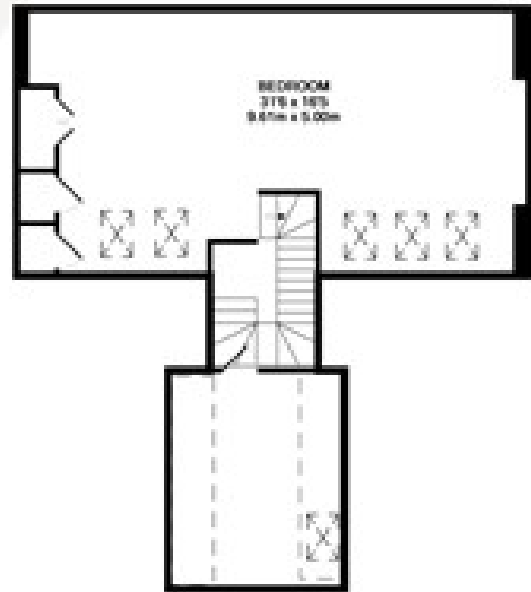
TOTAL APPROX. FLOOR AREA: 1524 SQ FT (140.8 SQ M)

These plans are intended to provide a general overview of the property and are not intended to be used as a basis for any contract or agreement. The actual layout and dimensions of the property may vary from those shown on these plans. The actual layout and dimensions of the property may vary from those shown on these plans. The actual layout and dimensions of the property may vary from those shown on these plans.

Scale: 1:50 (1:50)



1ST FLOOR  
APPROX. FLOOR  
AREA: 506 SQ FT  
(46.7 SQ M)



2ND FLOOR  
APPROX. FLOOR  
AREA: 108 SQ FT  
(10.0 SQ M)

Energy Efficiency Rating		Current	Potential
Very energy efficient - lower running costs			
(92 plus) A			
(81-91) B			
(69-80) C			72
(55-68) D		46	
(39-54) E			
(21-38) F			
(1-20) G			
Not energy efficient - higher running costs			
England & Wales		EU Directive 2002/91/EC	