



Granville Gardens, W5

A generous two-bedroom, two-bathroom apartment in the heart of Ealing Common, next to Ealing Common underground station, spanning over 760sq ft.

Corrigan Court, built approximately 14 years ago, showcases a contemporary and stylish design.

It features an open-plan reception/kitchen area giving a dynamic living space set with a backdrop of floor to ceiling windows and Juliet balconies filling the space with natural light.

The flat also offers the convenience of lift access and includes an allocated underground parking space.

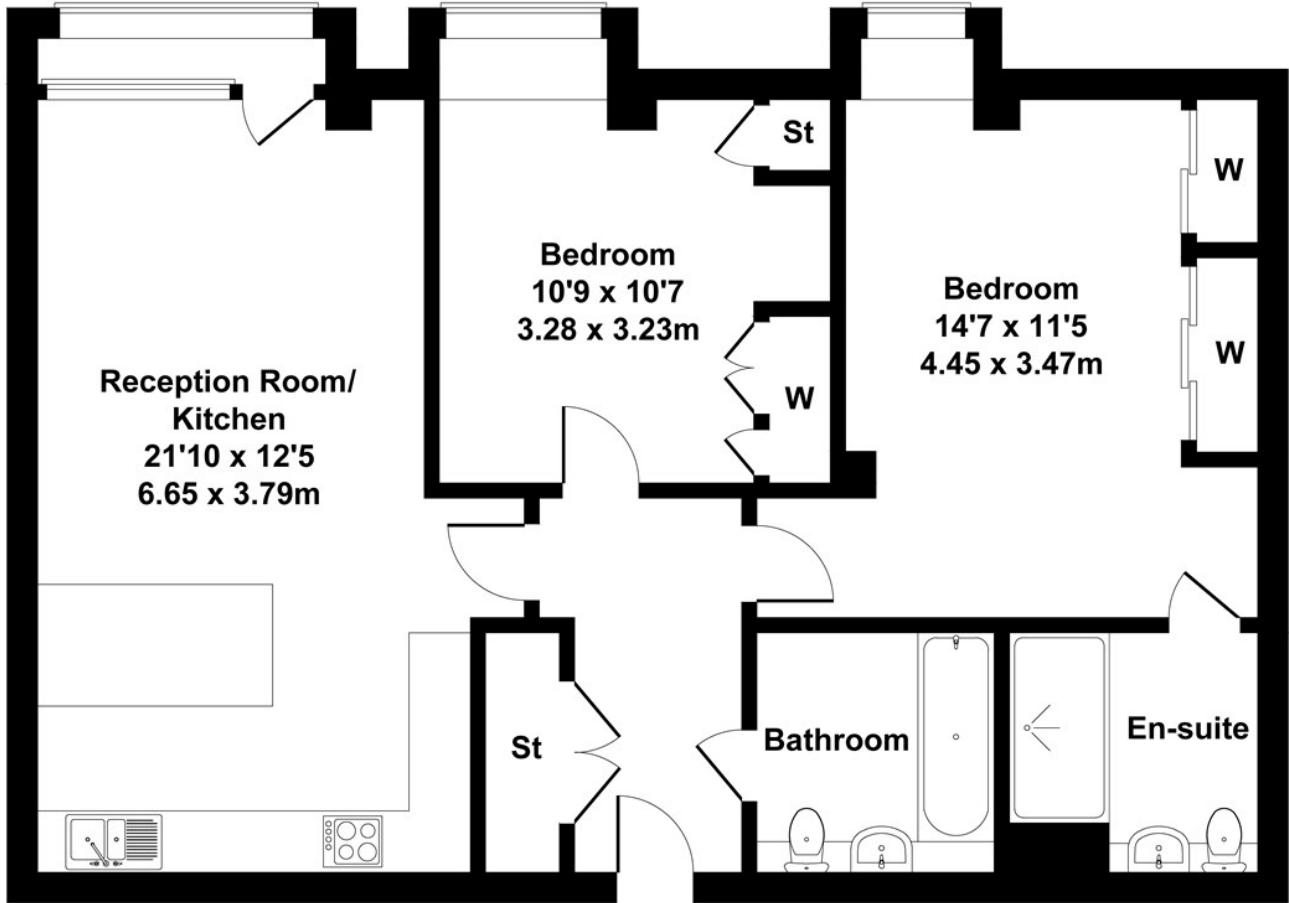
- Two double bedrooms
- Long lease (985 years remaining)
- 760 sq ft
- Heart of Ealing Common
- Chain free
- Lift access
- Gated underground allocated parking space
- Juliet balconies

£525,000

Corrigan Court

Approximate Gross Internal Area

760 sq ft - 70.6 sq m



Not to Scale. Produced by The Plan Portal 2023
For Illustrative Purposes Only.

Energy Efficiency Rating		
	Current	Potential
<i>Very energy efficient - lower running costs</i>		
(92 plus) A		
(81-91) B	83	83
(69-80) C		
(55-68) D		
(39-54) E		
(21-38) F		
(1-20) G		
<i>Not energy efficient - higher running costs</i>		
England & Wales	EU Directive 2002/91/EC 