

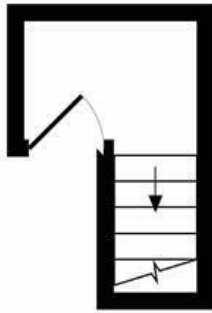


Curzon Road, W5

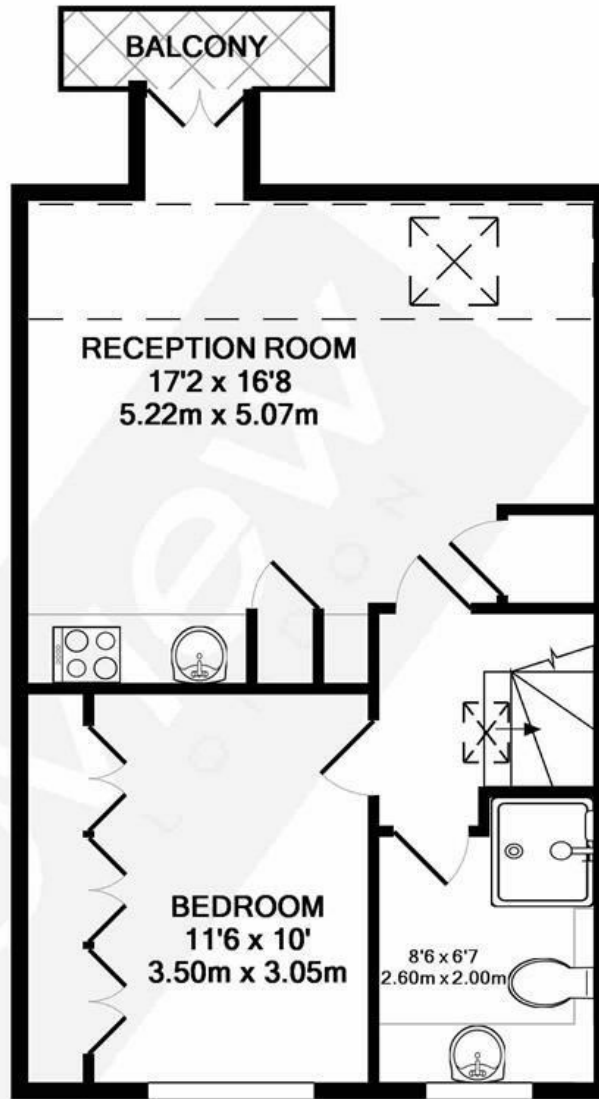
LONG LET. This one bedroom flat offers generous living space and is finished to a very high specification.

- PITSHANGER LANE
- ONE BEDROOM
- GREAT LOCATION
- LARGE RECEPTION
- HIGH SPECIFICATION
- BEAUTIFULLY FURNISHED

£1,700 PCM



1ST FLOOR
APPROX. FLOOR
AREA 33 SQ.FT.
(3.1 SQ.M.)



2ND FLOOR
APPROX. FLOOR
AREA 436 SQ.FT.
(40.5 SQ.M.)

TOTAL APPROX. FLOOR AREA 470 SQ.FT. (43.7 SQ.M.)

Whilst every attempt has been made to ensure the accuracy of the floor plan contained here, measurements of doors, windows, rooms and any other items are approximate and no responsibility is taken for any error, omission, or mis-statement. This plan is for illustrative purposes only and should be used as such by any prospective purchaser. The services, systems and appliances shown have not been tested and no guarantee as to their operability or efficiency can be given
Made with Metropix ©2018

Energy Efficiency Rating		
	Current	Potential
<i>Very energy efficient - lower running costs</i>		
(92 plus) A		
(81-91) B		
(69-80) C		
(55-68) D	50	54
(39-54) E		
(21-38) F		
(1-20) G		
<i>Not energy efficient - higher running costs</i>		
England & Wales	EU Directive 2002/91/EC	