



Meadvale Road, W5

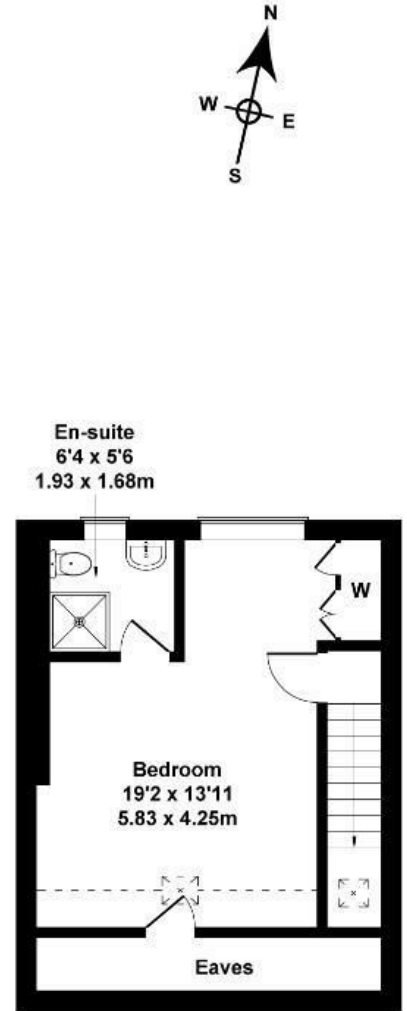
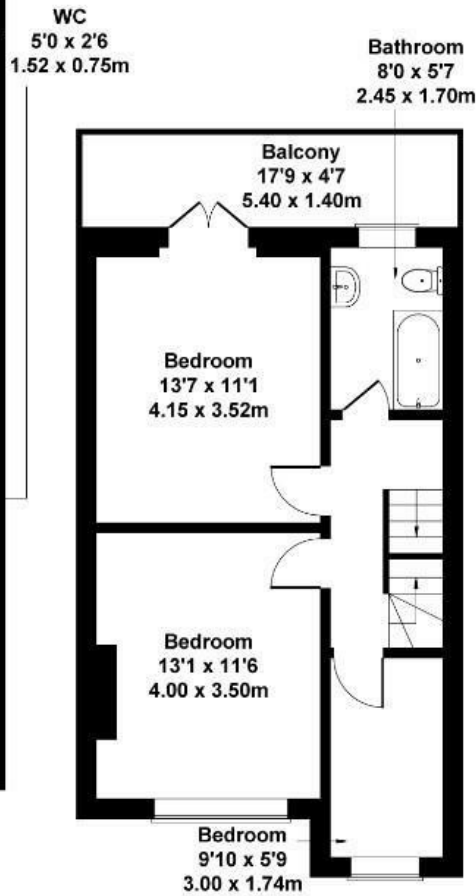
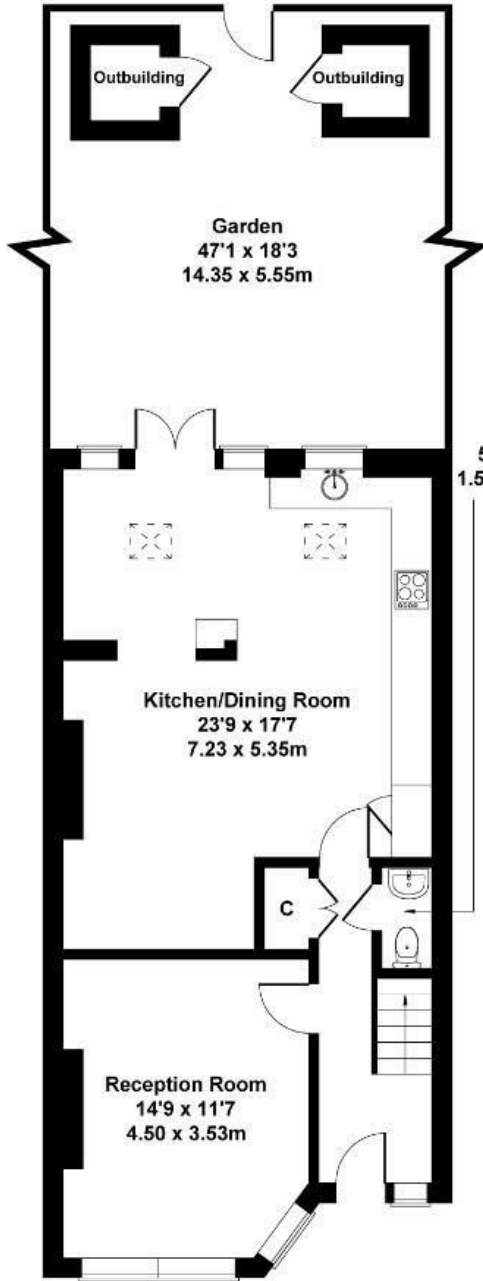
Long Let. Nestled on the charming Meadvale Road in Pitshanger, this delightful four-bedroom, two-bathroom house offers a perfect blend of comfort and convenience.

- Available from 13th March
- Four bedrooms
- Balcony over looking Pitshanger park
- on road parking
- Seperate reception area
- Ideal family home

£3,450

Meadvale Road

Approximate Gross Internal Area
1496 sq ft - 139 sq m
(Excluding Outbuildings & Eaves)



Not to Scale. Produced by The Plan Portal 2025
For Illustrative Purposes Only.

Energy Efficiency Rating		
	Current	Potential
<i>Very energy efficient - lower running costs</i>		
(92 plus) A		
(81-91) B		
(69-80) C		
(55-68) D		
(39-54) E		
(21-38) F		
(1-20) G		
<i>Not energy efficient - higher running costs</i>		
England & Wales	EU Directive 2002/91/EC	