



The Grove, W5

Centrally located in the heart of Ealing Broadway is this large raised ground floor one bedroom period conversion apartment that spans the entire width of an imposing period residence and is presented in excellent decorative order.

Measuring approx. 538 square foot, the property provides ample size for a buyer(s) looking for a good amount of space in a central Ealing location where you can enjoy the range and depth of the town centre on your doorstep.

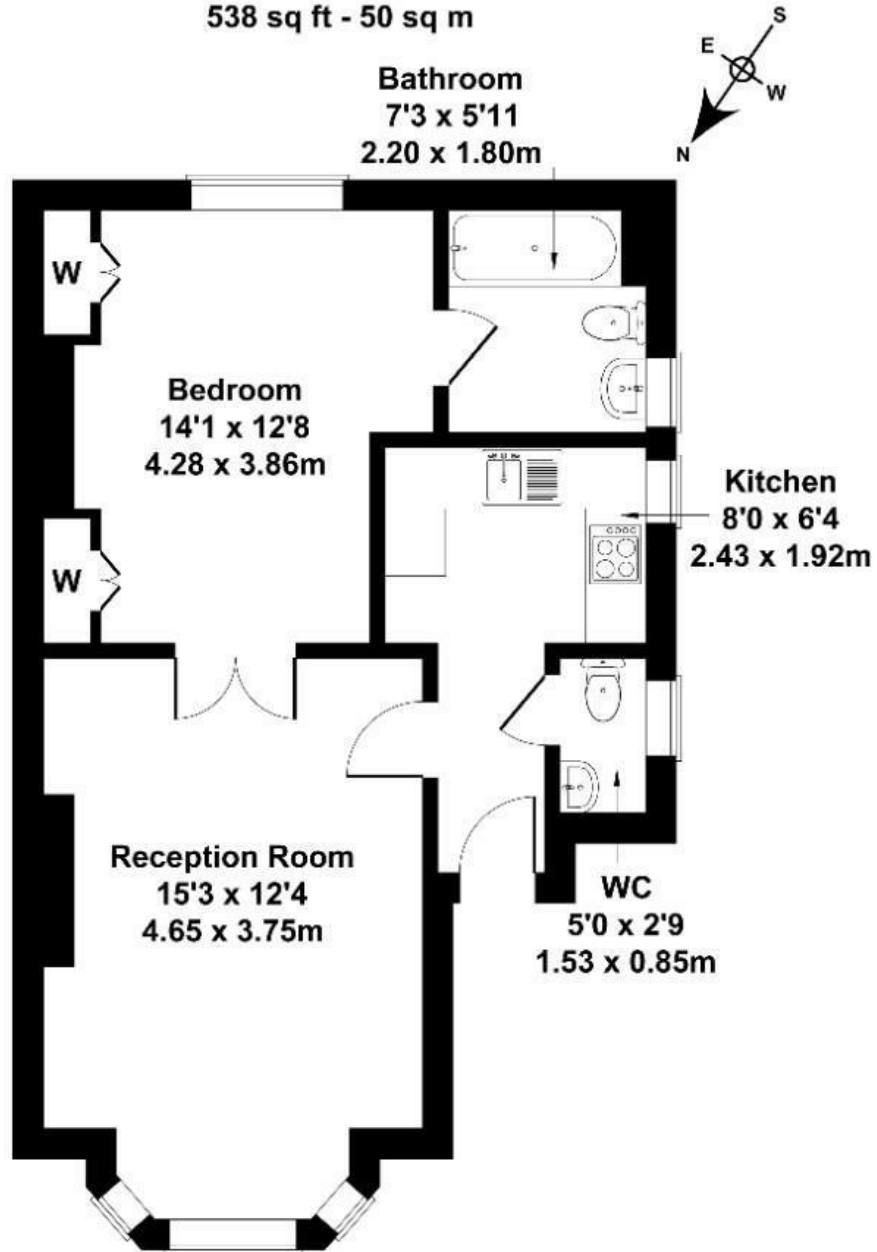
In brief the property has a large reception, separate kitchen, master bedroom and family style bathroom, additional WC and comes with a share in the freehold no onward chain.

- Period conversion
- Large one bedroom
- Raised ground floor
- Short walk to Ealing Broadway
- Share of freehold
- No chain
- High ceilings
- Close to 550 sq ft
- Next to Ealing Common Park
- Additional WC

£439,950

The Grove

Approximate Gross Internal Area
538 sq ft - 50 sq m



GROUND FLOOR

Not to Scale. Produced by The Plan Portal 2025
For Illustrative Purposes Only.

Energy Efficiency Rating		
	Current	Potential
<i>Very energy efficient - lower running costs</i>		
(92 plus) A		
(81-91) B		
(69-80) C		
(55-68) D		
(39-54) E		
(21-38) F		
(1-20) G		
<i>Not energy efficient - higher running costs</i>		
England & Wales	EU Directive 2002/91/EC	