

Horn Lane, London

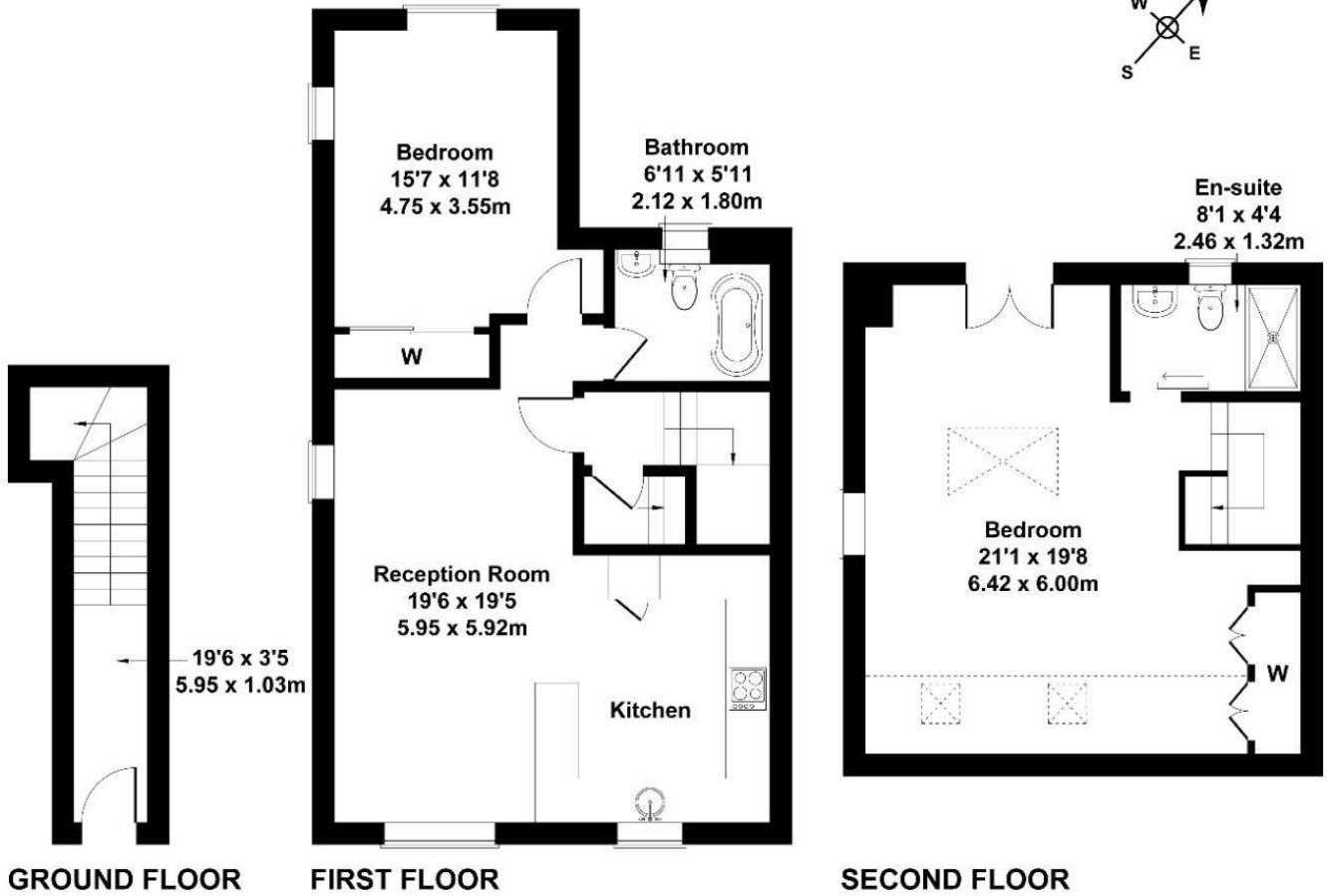
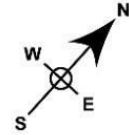
LONG LET. A large two double bedroom, two bathroom apartment that has been developed to an exemplary standard, centrally located near to everything Acton has to offer.

- TWO LARGE DOUBLE BEDROOMS
- TWO BATHROOMS
- MODERN FINISH
- GREAT LOCATION
- CLOSE TO STATIONS
- HIGH STANDARD

£2,600

Horn Lane

Approximate Gross Internal Area
1087 sq ft - 101 sq m



Not to Scale. Produced by The Plan Portal 2025
For Illustrative Purposes Only.

Energy Efficiency Rating		
	Current	Potential
<i>Very energy efficient - lower running costs</i>		
(92 plus) A		
(81-91) B		
(69-80) C		
(55-68) D		
(39-54) E		
(21-38) F		
(1-20) G		
<i>Not energy efficient - higher running costs</i>		
England & Wales	EU Directive 2002/91/EC	