



Uxbridge Road, London

A very sizeable one-bedroom apartment at 570 sq ft that offers well-appointed rooms, large stylish windows and a well-equipped kitchen.

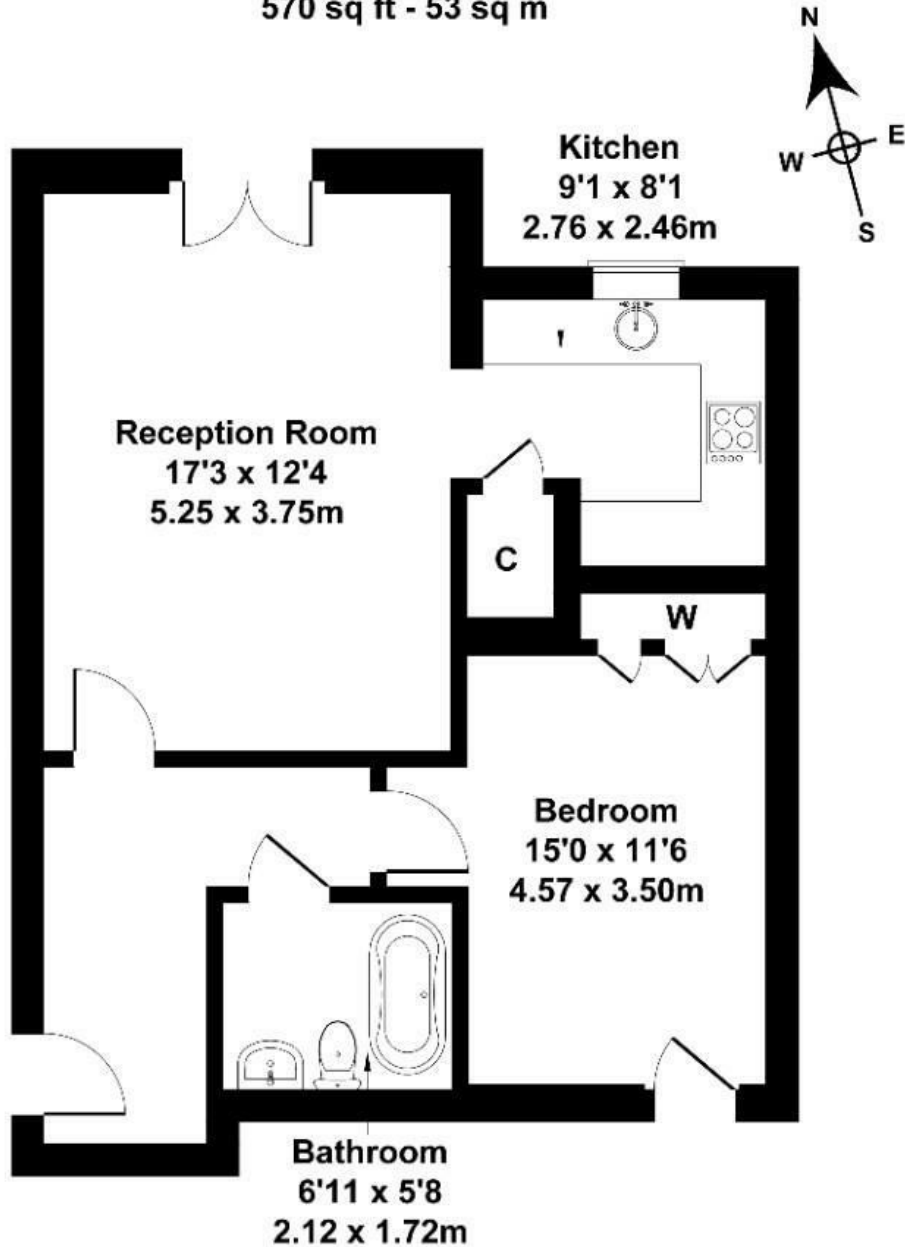
The apartment offers a bright, stylish and neutral décor with a good amount of internal storage and large bathroom. The communal garden offers an opportunity to enjoy the outdoors and for transport links, you are just a short walk from Ealing Common Tube station.

- Large one bed apartment
- First floor
- Purpose built
- 570 sq ft apartment
- Communal South facing gardens
- Long lease 132 yrs remain

Per Month

Uxbridge Road

Approximate Gross Internal Area
570 sq ft - 53 sq m



SECOND FLOOR

Not to Scale. Produced by The Plan Portal 2024
For Illustrative Purposes Only.

Energy Efficiency Rating		Current	Potential
Very energy efficient - lower running costs			
(92 plus) A			
(81-91) B			86
(69-80) C		71	
(55-68) D			
(39-54) E			
(21-38) F			
(1-20) G			
Not energy efficient - higher running costs			
England & Wales		EU Directive 2002/91/EC	