



Eskdale Avenue, UB5

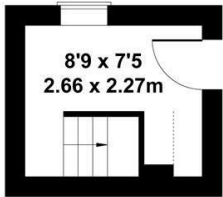
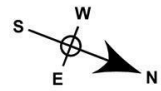
LONG LET. This spacious four-bedroom maisonette is arranged over two floors and offers generous living spaces in a private residential setting in the heart of Northolt.

- Available Now
- Four Bedrooms
- Two Bathrooms
- Modern fitted kitchen
- Close to local amenities
- Close to transport

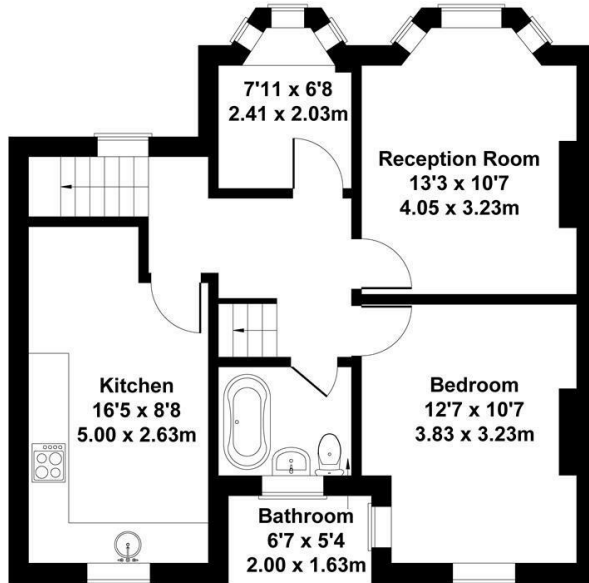
£2,300 Per Month

Eskdale Avenue

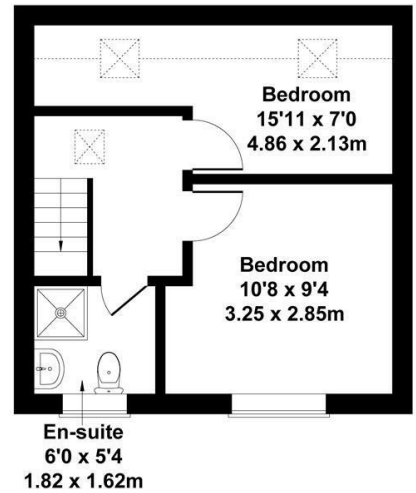
Approximate Gross Internal Area
980 sq ft - 91 sq m



GROUND FLOOR



FIRST FLOOR



SECOND FLOOR

Not to Scale. Produced by The Plan Portal 2024
For Illustrative Purposes Only.

Energy Efficiency Rating		
	Current	Potential
Very energy efficient - lower running costs		
(92 plus) A		
(81-91) B		
(69-80) C		
(55-68) D		
(39-54) E		
(21-38) F		
(1-20) G		
Not energy efficient - higher running costs		
England & Wales	EU Directive 2002/91/EC	