



## Boston Manor Road, TW8

This charming one-bedroom flat is situated on the top floor of this period property.

It has been thoughtfully designed to maximize space and comfort.

The main living area offers an inviting, open-plan layout that combines a reception area with an L-shaped kitchen, providing ample workspace and storage space.

The double bedroom is filled with natural light and features abundant storage options.

The flat also includes a modern and bright shower room with sleek tiling.

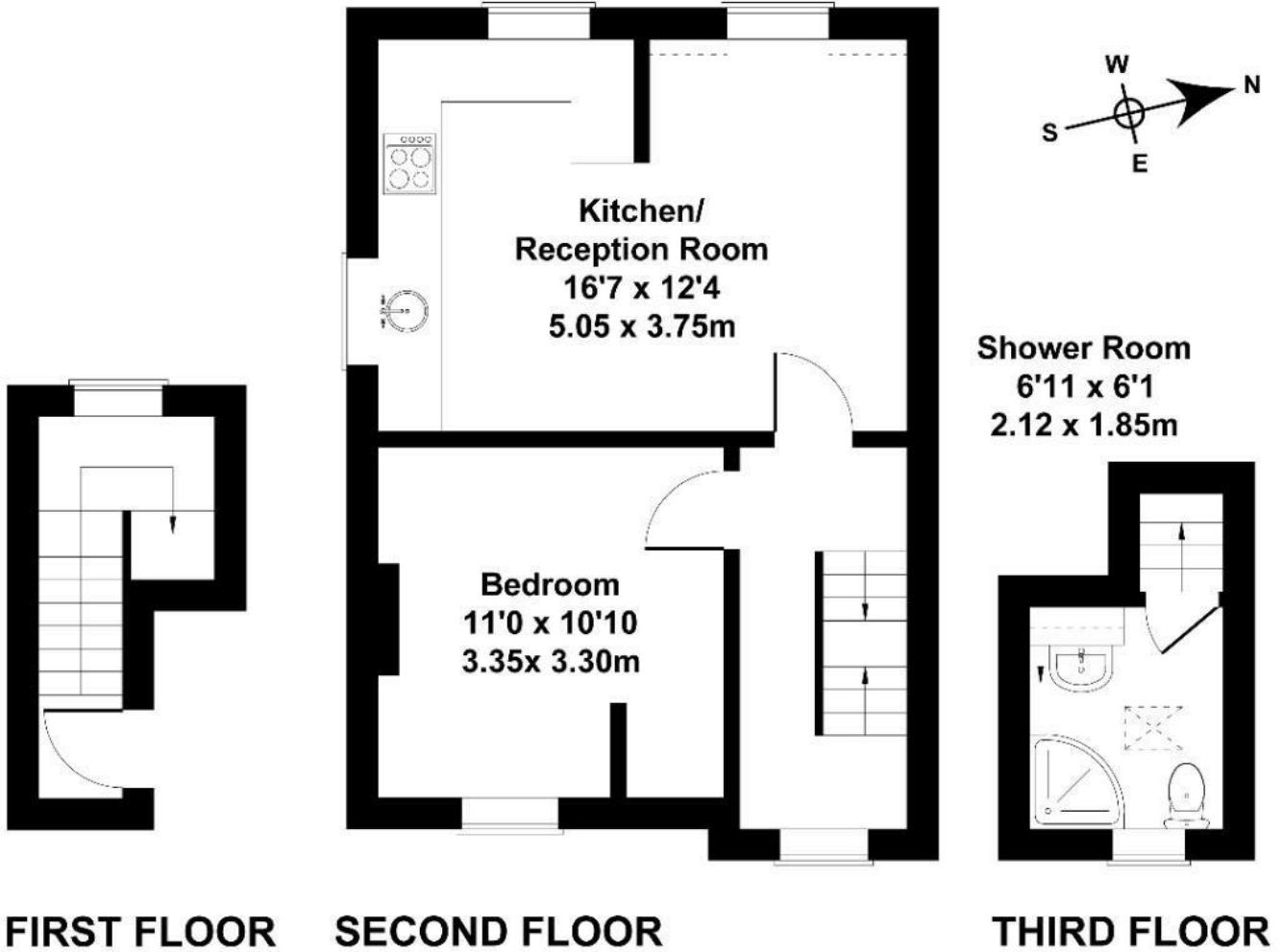
Decorated in neutral tones and finished with wooden flooring throughout, this home has a fresh and contemporary feel.

- One bedroom flat
- Period conversion
- Open plan living area
- Recently refurbished
- Close to Boston Manor tube and Brentford train station
- No onward chain

£249,950

# Boston Manor Road

Approximate Gross Internal Area  
495 sq ft - 46 sq m



Not to Scale. Produced by The Plan Portal 2024  
For Illustrative Purposes Only.

Energy Efficiency Rating		Current	Potential
Very energy efficient - lower running costs			
(92 plus) <b>A</b>			
(81-91) <b>B</b>			
(69-80) <b>C</b>			69
(55-68) <b>D</b>			
(39-54) <b>E</b>		41	
(21-38) <b>F</b>			
(1-20) <b>G</b>			
Not energy efficient - higher running costs			
<b>England &amp; Wales</b>	EU Directive 2002/91/EC		