



Nemoure Road, W3

A well-presented two-bedroom first floor flat set on Nemoure Road which is just a short walk from Acton Mainline station.

In brief, the property is over 600 sq ft in size, is in very good condition and has two good-sized bedrooms, family sized bathroom, separate kitchen and a large reception room.

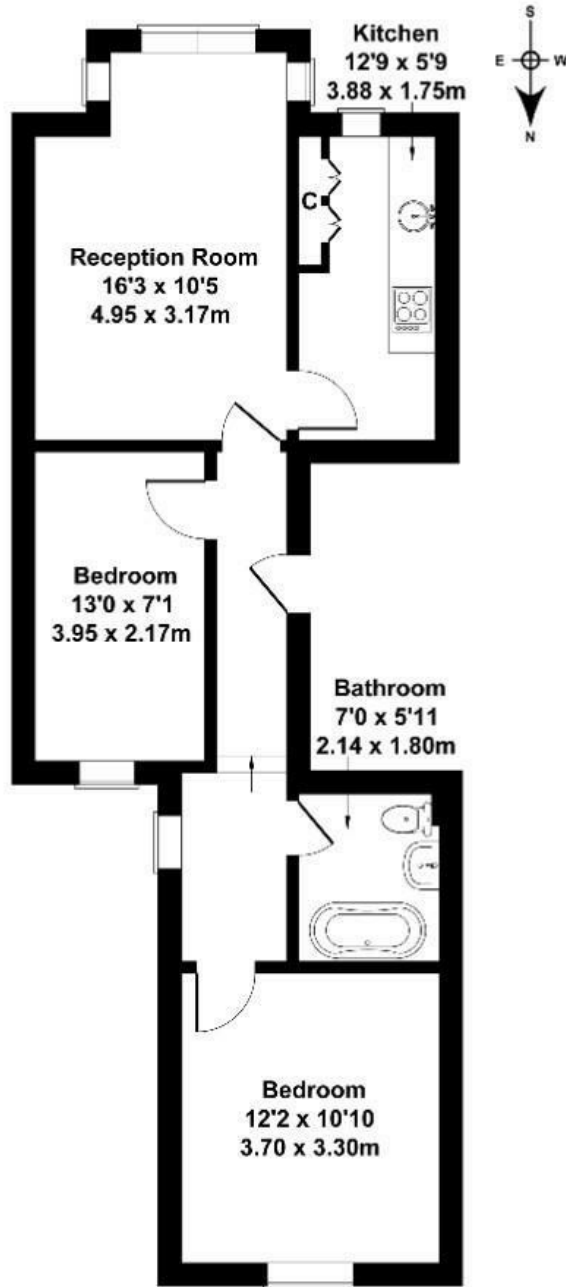
Further benefits are great light, long lease of 165 years and comes with no onward chain.

- Period conversion
- Two spacious bedrooms
- Separate kitchen
- No chain
- Long lease 165 years remaining
- Short walk to Elizabeth line
- Quiet residential street
- New flooring

£450,000

Nemoure Road

Approximate Gross Internal Area
603 sq ft - 56 sq m



FIRST FLOOR

Not to Scale. Produced by The Plan Portal 2024
For Illustrative Purposes Only.

Energy Efficiency Rating		Current	Potential
Very energy efficient - lower running costs			
(92 plus) A			
(81-91) B			
(69-80) C			
(55-68) D		61	76
(39-54) E			
(21-38) F			
(1-20) G			
Not energy efficient - higher running costs			
England & Wales	EU Directive 2002/91/EC		