

## Granville Gardens, W5

LONG LET. Located close to transport links this large two bedroom apartment boasts a modern interior with high quality fixtures and fittings.

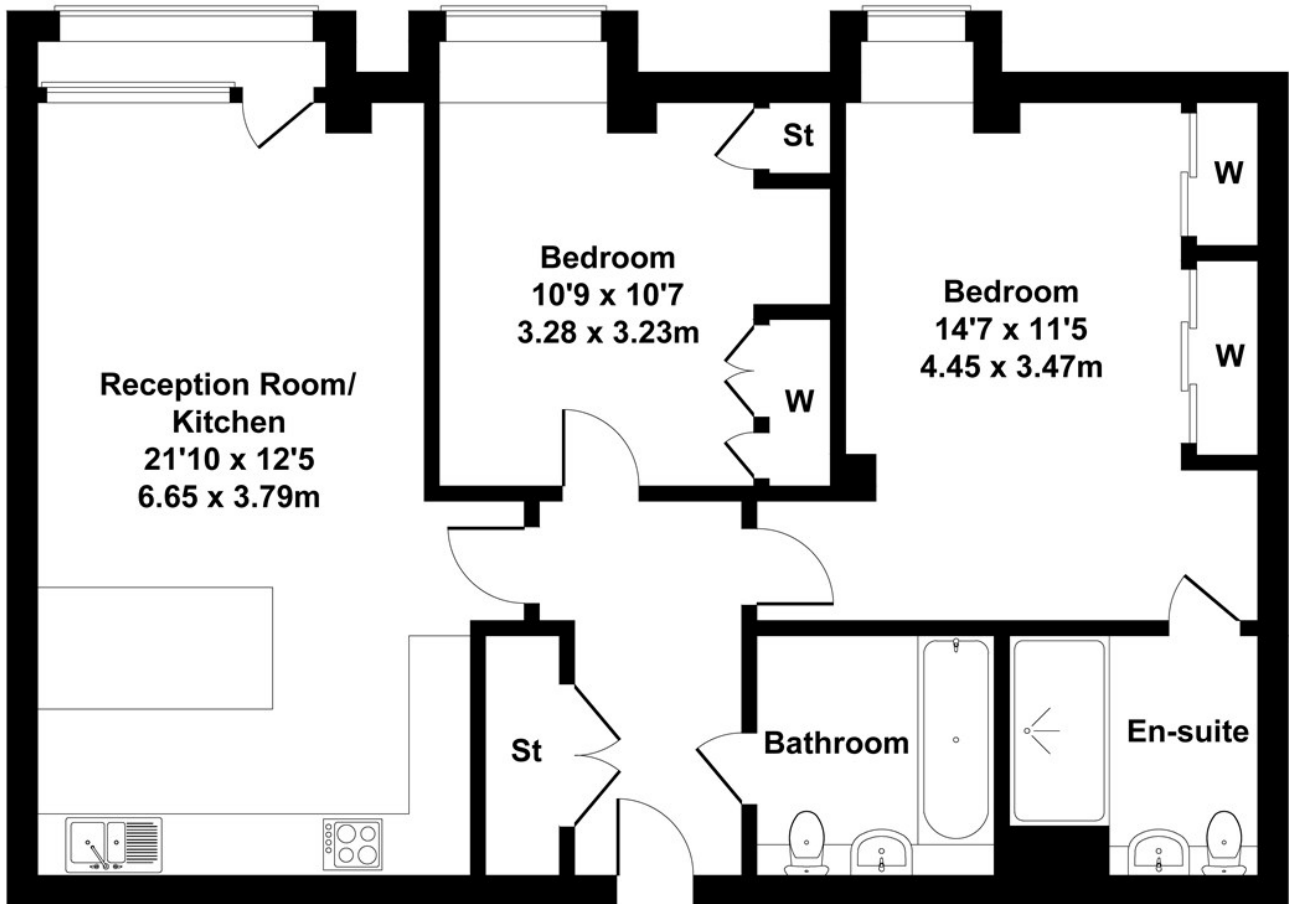
- UNDERGROUND PARKING
- AVAILABLE 15th JANUARY 2025
- GREAT LOCATION
- CLOSE TO TRANSPORT
- EARLY VIEWING ADVISED
- MODERN INTERIOR

£2,300

# Corrigan Court

Approximate Gross Internal Area

760 sq ft - 70.6 sq m



Not to Scale. Produced by The Plan Portal 2023  
For Illustrative Purposes Only.

Energy Efficiency Rating		
	Current	Potential
<i>Very energy efficient - lower running costs</i>		
(92 plus) <b>A</b>		
(81-91) <b>B</b>	83	83
(69-80) <b>C</b>		
(55-68) <b>D</b>		
(39-54) <b>E</b>		
(21-38) <b>F</b>		
(1-20) <b>G</b>		
<i>Not energy efficient - higher running costs</i>		
<b>England &amp; Wales</b>	EU Directive 2002/91/EC	