



Granville Gardens, W5

LONG LET. Located close to transport links this large two bedroom apartment boasts a modern interior with high quality fixtures and fittings.

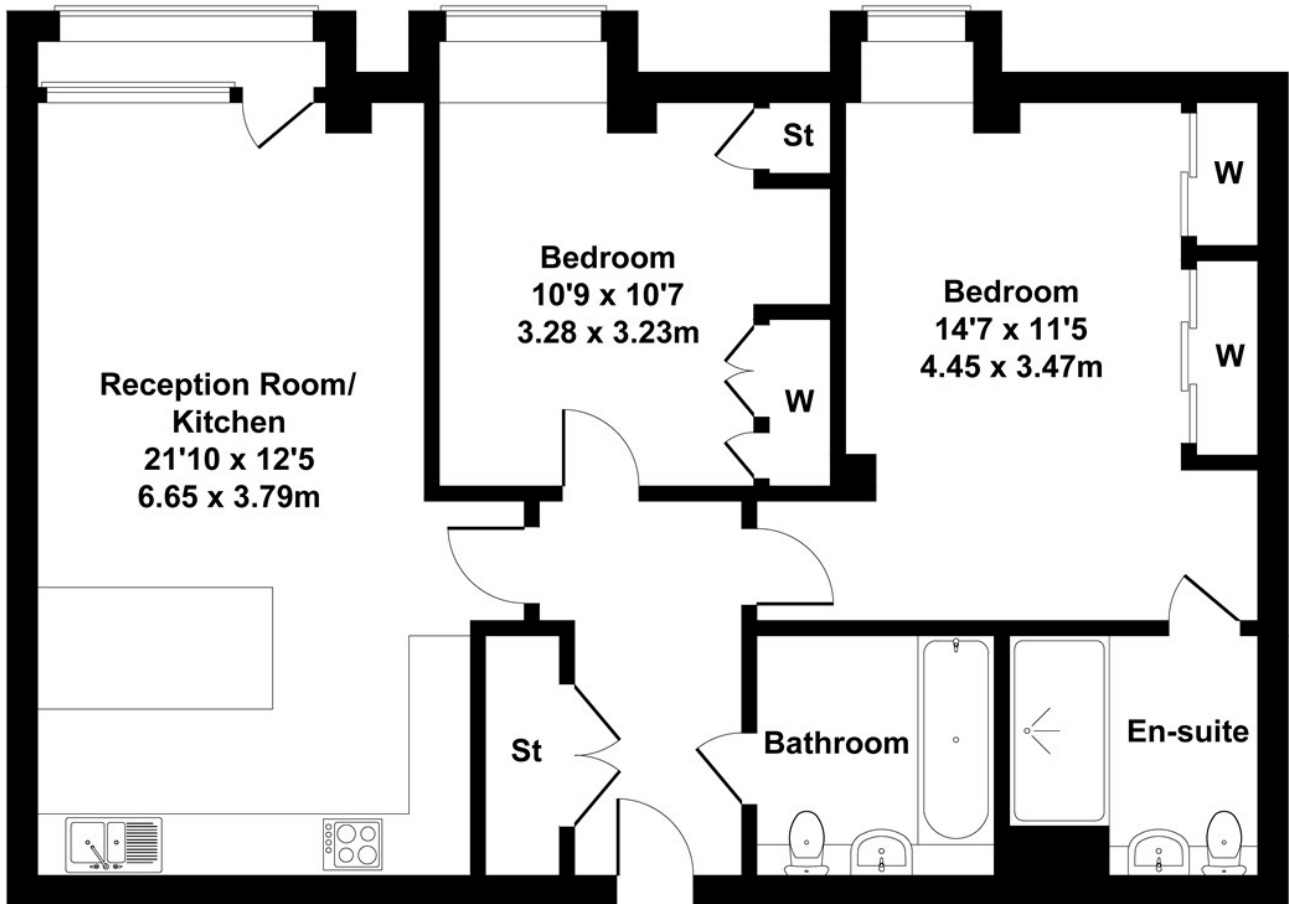
- UNDERGROUND PARKING
- AVAILABLE 15th JANUARY 2025
- GREAT LOCATION
- CLOSE TO TRANSPORT
- EARLY VIEWING ADVISED
- MODERN INTERIOR

£2,450

Corrigan Court

Approximate Gross Internal Area

760 sq ft - 70.6 sq m



Not to Scale. Produced by The Plan Portal 2023
For Illustrative Purposes Only.

Energy Efficiency Rating		
	Current	Potential
<i>Very energy efficient - lower running costs</i>		
(92 plus) A		
(81-91) B	83	83
(69-80) C		
(55-68) D		
(39-54) E		
(21-38) F		
(1-20) G		
<i>Not energy efficient - higher running costs</i>		
England & Wales	EU Directive 2002/91/EC	