

Eynham Road, W12

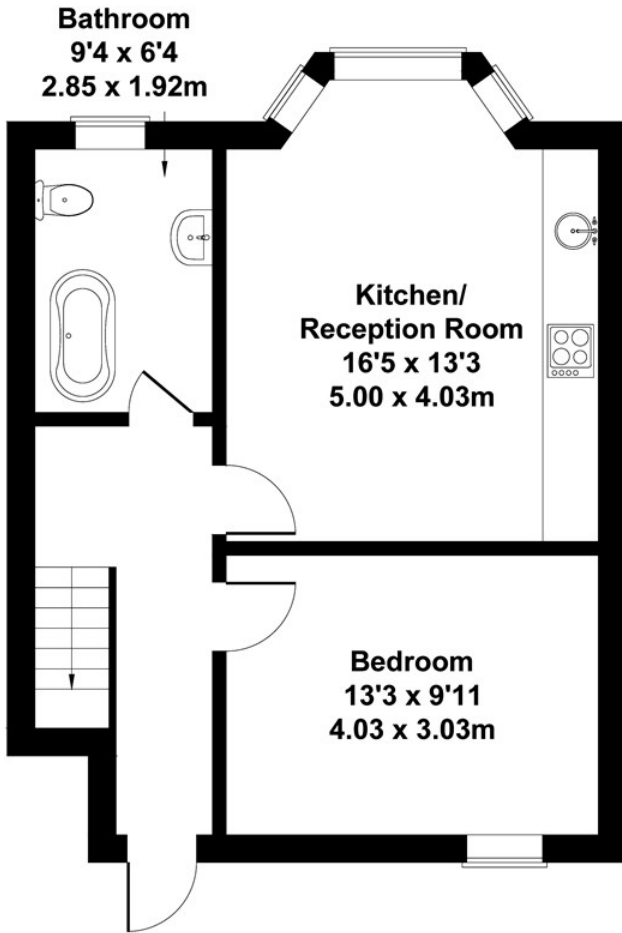
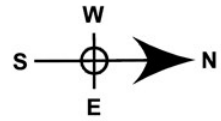
LONG LET. This stunning three bedroom split level flat boasts a modern interior is situated perfectly for local amenities and transport links.

- WALKING DISTANCE TO WESTFIELD
- MODERN INTERIOR
- OPEN PLAN KITCHEN
- THREE BEDROOMS
- TWO BATHROOMS
- CLOSE TO TRANSPORT

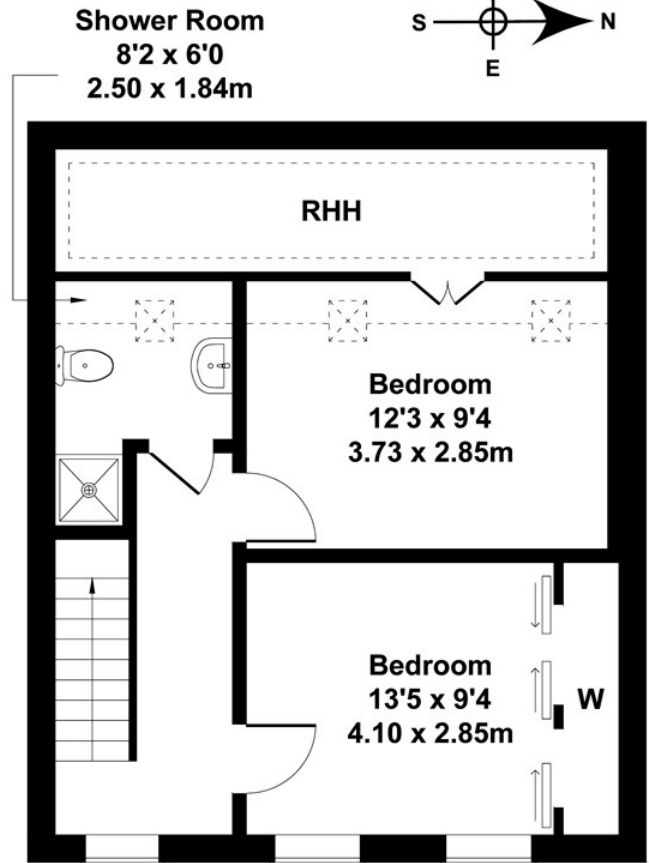
£2,300 PCM

Eynham Road

Approximate Gross Internal Area
980 sq ft - 91 sq m



FIRST FLOOR



SECOND FLOOR

Not to Scale. Produced by The Plan Portal 2021
For Illustrative Purposes Only.

Energy Efficiency Rating		
	Current	Potential
<i>Very energy efficient - lower running costs</i>		
(92 plus) A		
(81-91) B		
(69-80) C		
(55-68) D		
(39-54) E		
(21-38) F		
(1-20) G		
<i>Not energy efficient - higher running costs</i>		
England & Wales	EU Directive 2002/91/EC	