



## Woodfield Road, London

A stunning large brand-new conversion flat situated just a short distance from Pitshanger high street and Ealing Broadway town centre. Featuring two large double bedrooms, two luxury bathrooms and spans 958 sq ft across the first floor of this imposing detached house.

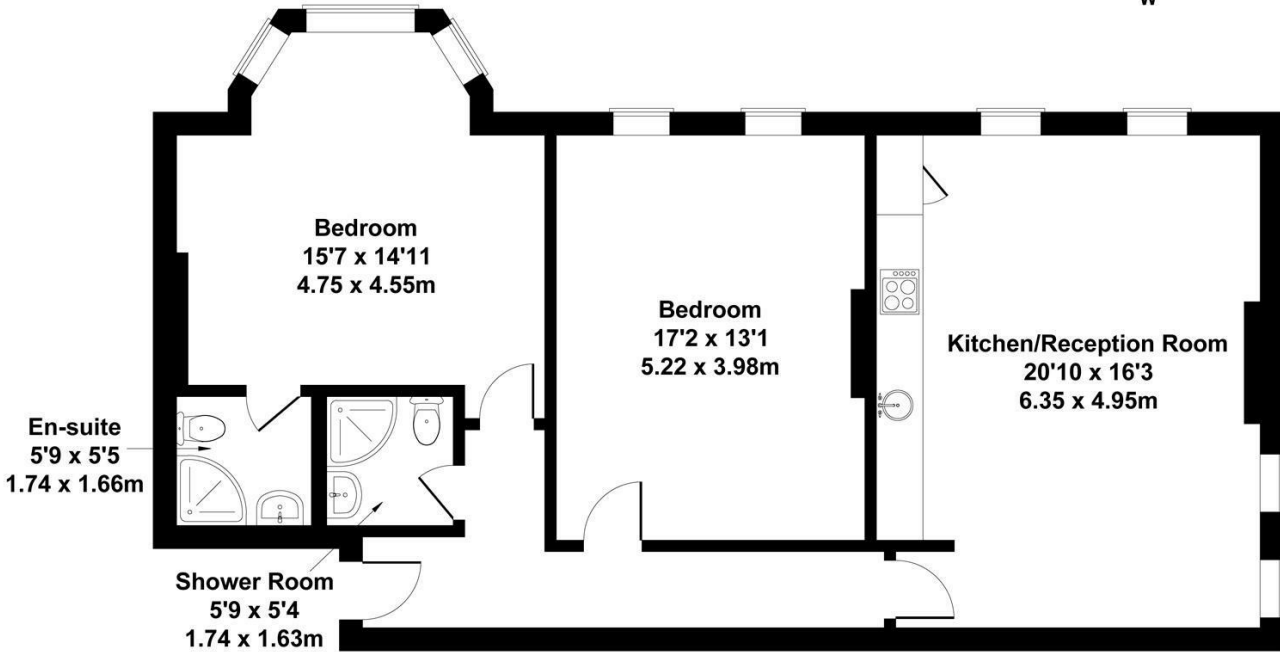
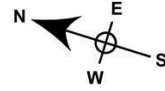
In total the property measures 958 sq. ft, comes in bespoke condition and has an open plan kitchen measuring 20'10 x 16'3. The property further benefits from a share in the freehold, underlying lease of 999 yrs and no onward chain.

£648,500

- New conversion
- Two double bedrooms
- Close to a 1000 sq ft
- Two bathrooms
- Share of freehold
- No chain
- Short distance to Ealing Broadway
- First floor
- Very bright flat
- Pitshanger just a short stroll away

# Woodfield Road

Approximate Gross Internal Area  
958 sq ft - 89 sq m



## FIRST FLOOR

Not to Scale. Produced by The Plan Portal 2024  
For Illustrative Purposes Only.

Energy Efficiency Rating		Current	Potential
Very energy efficient - lower running costs			
(92 plus) <b>A</b>			
(81-91) <b>B</b>			
(69-80) <b>C</b>		76	76
(55-68) <b>D</b>			
(39-54) <b>E</b>			
(21-38) <b>F</b>			
(1-20) <b>G</b>			
Not energy efficient - higher running costs			
<b>England &amp; Wales</b>	EU Directive 2002/91/EC		