



The Common, W5

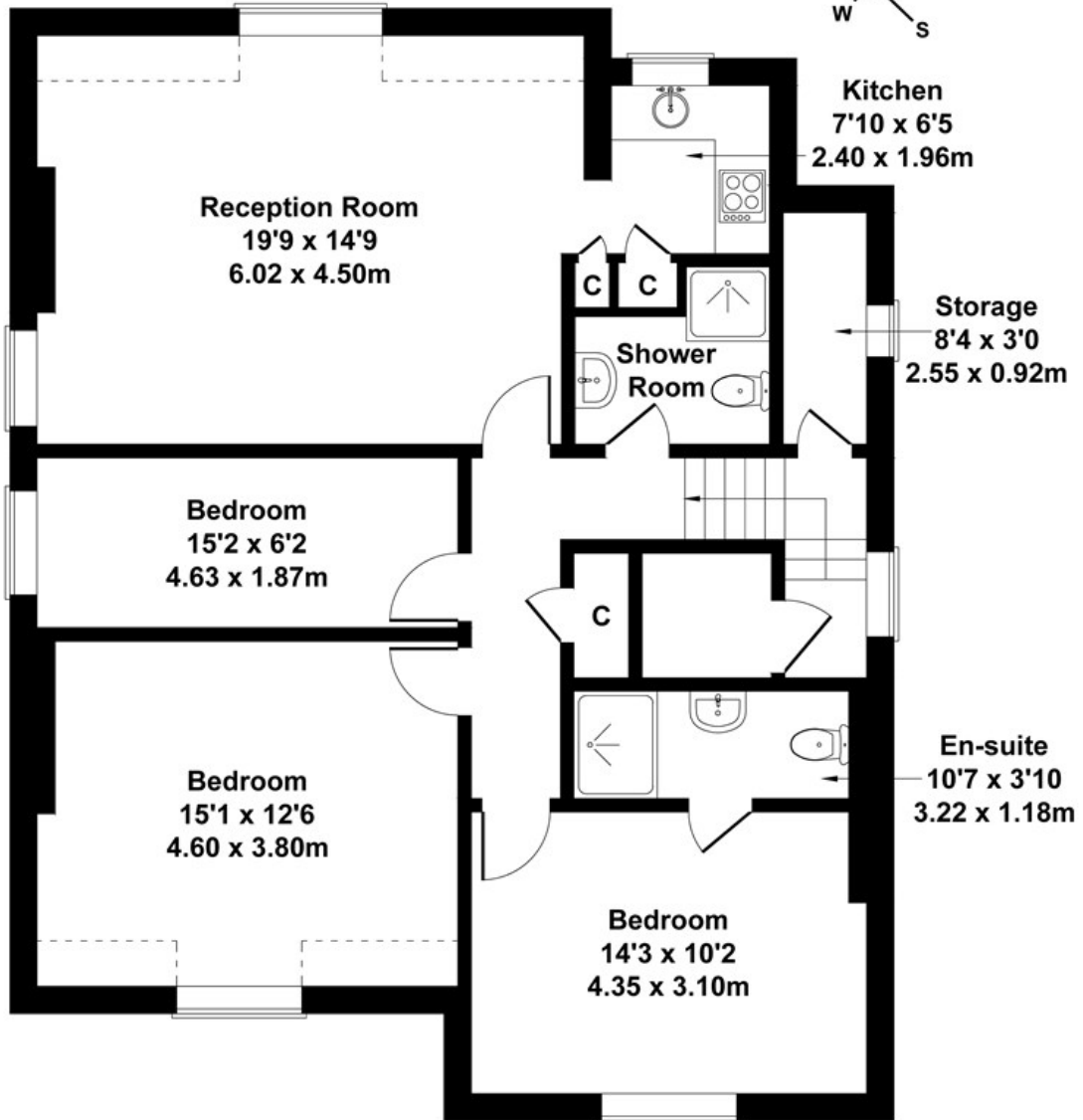
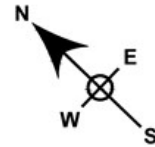
LONG LET . A top floor three bedroom, two bathroom flat has been developed to an exemplary standard, centrally located for excellent transport links.

- AVAILABLE NOW
- THREE BEDROOMS
- TWO BATHROOMS
- OVER LOOKING EALING COMMON
- PARKING
- IDEAL LOCATION

£2,800 PCM

The Common

Approximate Gross Internal Area
1055 sq ft - 98 sq m



SECOND FLOOR

Not to Scale. Produced by The Plan Portal 2023
For Illustrative Purposes Only.

Energy Efficiency Rating		
	Current	Potential
<i>Very energy efficient - lower running costs</i>		
(92 plus) A		
(81-91) B		
(69-80) C		
(55-68) D		
(39-54) E		
(21-38) F		
(1-20) G		
<i>Not energy efficient - higher running costs</i>		
England & Wales	EU Directive 2002/91/EC	