



## The Common, W5

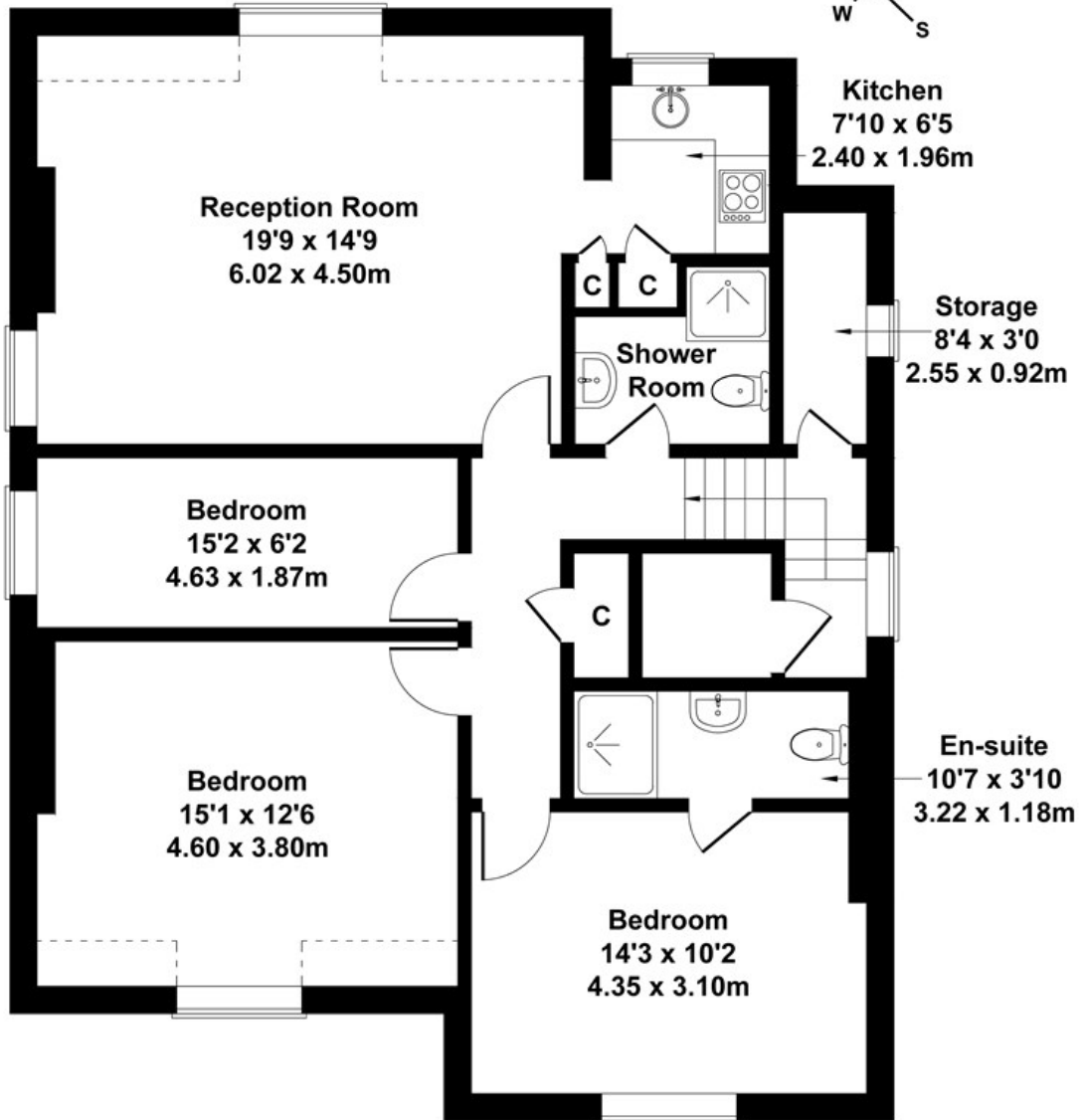
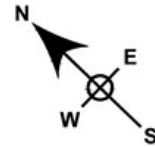
LONG LET . A top floor three bedroom, two bathroom flat has been developed to an exemplary standard, centrally located for excellent transport links.

- AVAILABLE NOW
- THREE BEDROOMS
- TWO BATHROOMS
- OVER LOOKING EALING COMMON
- PARKING
- IDEAL LOCATION

£3,000 PCM

# The Common

Approximate Gross Internal Area  
1055 sq ft - 98 sq m



## SECOND FLOOR

Not to Scale. Produced by The Plan Portal 2023  
For Illustrative Purposes Only.

Energy Efficiency Rating		
	Current	Potential
<i>Very energy efficient - lower running costs</i>		
(92 plus) <b>A</b>		
(81-91) <b>B</b>		
(69-80) <b>C</b>		
(55-68) <b>D</b>		
(39-54) <b>E</b>		
(21-38) <b>F</b>		
(1-20) <b>G</b>		
<i>Not energy efficient - higher running costs</i>		
<b>England &amp; Wales</b>	EU Directive 2002/91/EC	