



## Hoopers Mews, W3

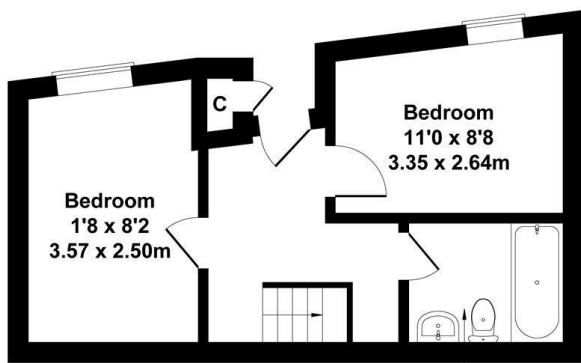
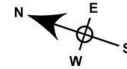
Long Let - a charming 3-bedroom, 2-bathroom mews house that has been newly refurbished and is now available for you to make it your own. This delightful property is perfect for sharers or a family looking for a cosy yet spacious home.

- Available now
- Three bedroom house
- Newly refurbished
- Two bathrooms
- Ideal location
- Early viewing advised

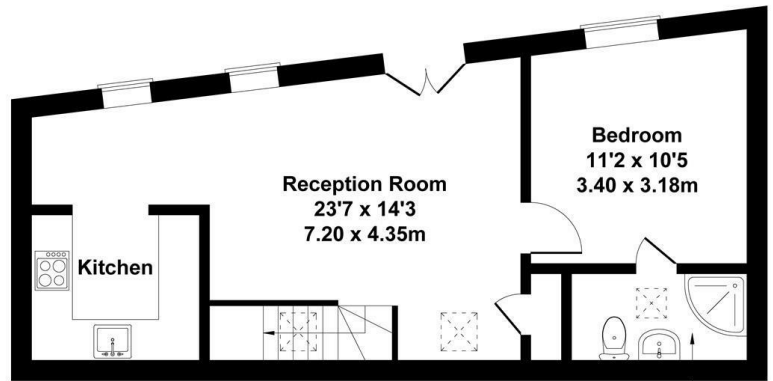
£2,600 Per Month

# Hoopers Mews

Approximate Gross Internal Area  
807 sq ft - 75 sq m



**GROUND FLOOR**



**FIRST FLOOR**

**Bathroom**  
7'5 x 5'9  
2.27 x 1.75m

**En-suite**  
8'6 x 4'2  
2.58 x 1.27m

Not to Scale. Produced by The Plan Portal 2024  
**For Illustrative Purposes Only.**

Energy Efficiency Rating		Current	Potential
Very energy efficient - lower running costs			
(92 plus) <b>A</b>			
(81-91) <b>B</b>			
(69-80) <b>C</b>			
(55-68) <b>D</b>			
(39-54) <b>E</b>			
(21-38) <b>F</b>			
(1-20) <b>G</b>			
Not energy efficient - higher running costs			
<b>England &amp; Wales</b>	EU Directive 2002/91/EC		