



Northcote Avenue, London

A large 3-bedroom first floor apartment situated on a quiet cul-de-sac in the heart of Ealing Broadway centre. The property comes in great order throughout and has a long lease of 177 years and no onward chain.

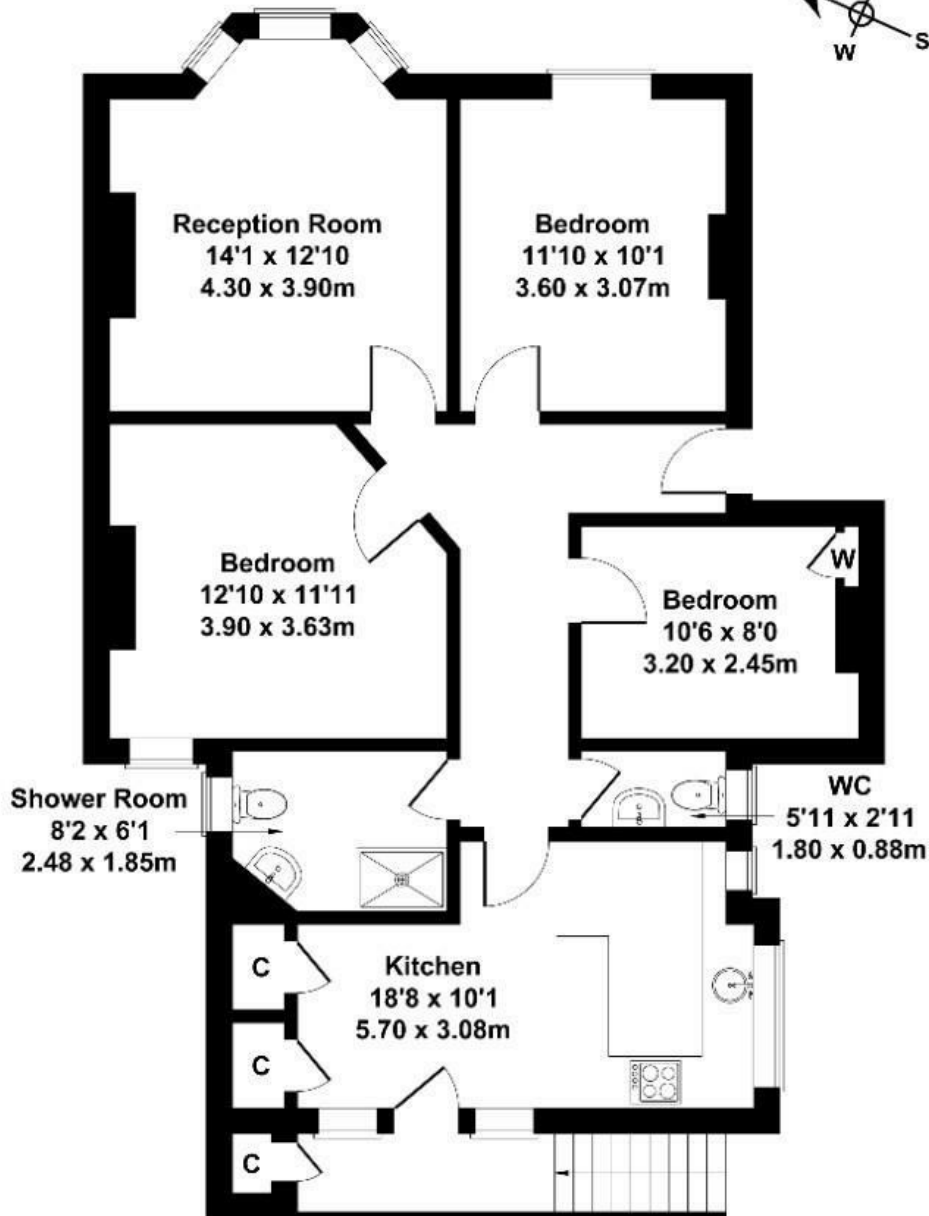
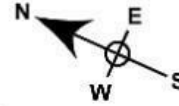
Measuring close to 900 sq ft with three double bedrooms, a stylish family bathroom, large separate eat in kitchen with direct access to communal courtyard and an ideal location to take advantage of everything Ealing Broadway has to offer.

£549,950

- Purpose built
- Three double bedrooms
- First floor
- Long lease 177 yrs
- Excellent condition
- Prime Ealing Broadway location
- Close to 900 sq ft
- No chain
- Close to multiple transport links
- Communal gardens

Northcote Avenue

Approximate Gross Internal Area
893 sq ft - 83 sq m



FIRST FLOOR

Not to Scale. Produced by The Plan Portal 2024
For Illustrative Purposes Only.

| Energy Efficiency Rating | | Current | Potential |
|---|--|-------------------------|-----------|
| Very energy efficient - lower running costs | | | |
| (92 plus) A | | | |
| (81-91) B | | | |
| (69-80) C | | | |
| (55-68) D | | 58 | 65 |
| (39-54) E | | | |
| (21-38) F | | | |
| (1-20) G | | | |
| Not energy efficient - higher running costs | | | |
| England & Wales | | EU Directive 2002/91/EC | |