



Cumberland Park, W3

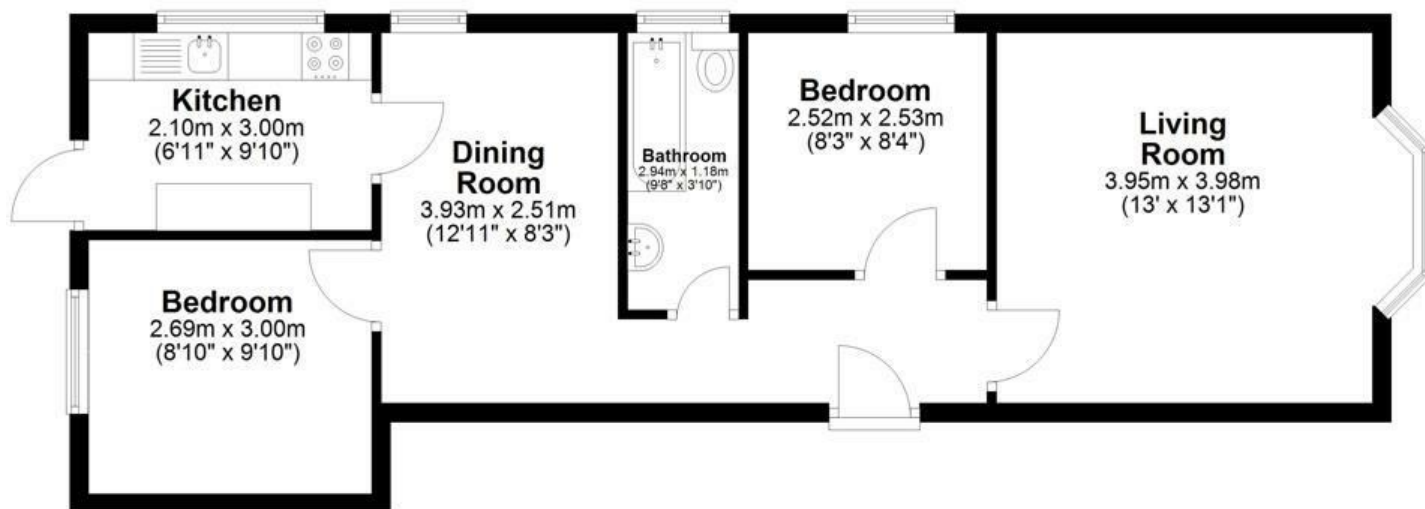
LONG LET: Ideally located, this spacious two-bedroom flat offers modern interiors, a fully fitted kitchen with a washing machine and dishwasher, access to a shared garden, and easy access to nearby transport links and local amenities.

- TWO BEDROOMS
- MODEN KITCHEN AND BATHROOM
- SEPARATE DINING ROOM
- CLOSE TO TRANSPORT LINKS AND AMENITIES
- PARKING AVAILABLE
- SHARED GARDEN

£2,200 Per Month

Ground Floor

Approx. 56.7 sq. metres (609.9 sq. feet)



Measurements are approximate. Not to Scale. Illustrative purposes only.
Plan produced using PlanUp.

Energy Efficiency Rating		
	Current	Potential
<i>Very energy efficient - lower running costs</i>		
(92 plus) A		
(81-91) B		
(69-80) C		
(55-68) D		
(39-54) E		
(21-38) F		
(1-20) G		
<i>Not energy efficient - higher running costs</i>		
England & Wales	EU Directive 2002/91/EC	